

GENERAL NOTES AND OPERATIONS PLAN

GOVERNING CODE

2021 INTERNATIONAL BUILDING CODE (BASED ON ASCE 7-16)
ANSI E1.21 (REFERENCES ASCE 37-14)

DESIGN LOADS

1. ROOF LOAD:
 - A. STRUCTURE SELFWEIGHT
 - B. ROOF TARP: 1 PSF
 - C. RIGGING LOADS: NO RIGGING LOADS ON STRUCTURE

2. WIND LOAD (PER ASCE 7):
 - A. BASIC WIND SPEED (BASED ON 3-SECOND GUST) = 90 MPH APPLIED TO THE STRUCTURAL FRAME AND PERMANENT ATTACHMENTS FOR AN "OPEN" CONDITION MULTIPLIED BY A REDUCTION FACTOR IN ACCORDANCE WITH ASCE 37-14.
 - B. BASIC WIND SPEED (BASED ON 3-SECOND GUST) = 40 MPH APPLIED TO THE STRUCTURAL FRAME AND PROJECTED AREAS OF THE SCRIMMED WALLS FOR THE "FULLY ENCLOSED" CONDITION AND "PARTIALLY ENCLOSED" CONDITION.
 - C. WIND REDUCTION FACTOR = 0.75 (BASED ON ASCE 37-14)
 - D. BUILDING CATEGORY = II
 - E. WIND IMPORTANCE FACTOR, $I = 1.0$
 - F. WIND EXPOSURE = C (ALL WIND DIRECTIONS)
 - G. INTERNAL PRESSURE COEFFICIENT PARTIALLY ENCLOSED, $G_{Cpi} = +0.55, -0.55$

CONSTRUCTION AND SAFETY

1. CONTRACTOR SHALL BRACE ENTIRE STRUCTURE AS REQUIRED TO MAINTAIN STABILITY UNTIL COMPLETE AND FUNCTIONING AS THE DESIGNED UNIT. UNLESS EXPLICITLY DESCRIBED ELSEWHERE IN THESE APPENDICES, OUR SCOPE INCLUDES ONLY NORMAL LOADING CONDITIONS OCCURRING DURING USE AFTER THE SYSTEM HAS BEEN INSTALLED, BALLASTED, AND Laterally STABILIZED IN ACCORDANCE WITH THE SYSTEM'S REQUIRED STABILIZING SYSTEM. OUR SCOPE DOES NOT INCLUDE INSTALLATION MEANS AND METHODS USED DURING INSTALLATION OR REMOVAL OF THE SYSTEM, OCCURRING PRIOR TO OR AFTER THE IN-USE CONDITION.

2. ENGINEER SHALL NOT BE RESPONSIBLE FOR THE MEANS, METHODS, TECHNIQUES, SEQUENCES OR PROCEDURES OF CONSTRUCTION SELECTED BY CONTRACTOR.
3. THE CONTRACTOR WILL BE SOLELY AND COMPLETELY RESPONSIBLE FOR CONDITIONS OF THE JOB SITE INCLUDING SAFETY OF ALL PERSONS AND PROPERTY DURING PERFORMANCE OF THE WORK. THIS REQUIREMENT WILL APPLY CONTINUOUSLY AND IS NOT LIMITED TO NORMAL WORKING HOURS. WHEN ON SITE, THE ENGINEER IS RESPONSIBLE FOR HIS/HER OWN SAFETY BUT HAS NO RESPONSIBILITY FOR THE SAFETY OF OTHER PERSONNEL OR SAFETY CONDITIONS AT THE SITE.
4. THE ROOF TARP IS A "SUN-SHADE" SYSTEM ONLY AND IS NOT INTENDED FOR PERSONNEL ACCESS OR SUPPORT. ROOF SYSTEM SHALL BE ACCESSED FROM THE TRUSS COMPONENTS ONLY.
5. ROOF SYSTEM ERECTION:
 - A. ALL CONCRETE, WATER BALLAST, OR ANCHORAGE STRAPS SHALL BE IN PLACE PRIOR TO HOISTING OF ROOF SYSTEM.
 - B. ROOF SYSTEM SHALL NOT BE HOISTED DURING WIND SPEEDS GREATER THAN 10 MPH.

HEAVY RAIN ACTION PLAN

1. DURING HEAVY RAIN EVENTS, ROOF PANELS SHALL BE CUT OR REMOVED TO ELIMINATE WATER PONDING. AT NO TIME SHOULD PONDED WATER BE ALLOWED TO ACCUMULATE ON THE ROOF STRUCTURE.
2. IF PONDED RAIN IS ALLOWED TO ACCUMULATE AND NOT REMOVED, ALL PERSONNEL SHOULD MAINTAIN SAFE CLEAR DISTANCE AS COLLAPSE OF THE ROOF IS POTENTIALLY IMMINENT.

HIGH WIND-LOAD ACTION PLAN (HWAP) REQUIREMENTS

THIS SECTION IS BASED ON THE ANSI STANDARD "E1.21, TEMPORARY STRUCTURES USED FOR TECHNICAL PRODUCTION OF OUTDOOR ENTERTAINMENT EVENTS".

1. THE HWAP DEFINES WIND DESIGN SPEEDS FOR AN "OPEN MAIN STAGE ROOF SYSTEM" AND A "FULLY ENCLOSED MAIN STAGE ROOF SYSTEM".

-
- A. AN "OPEN MAIN STAGE ROOF SYSTEM" SHALL BE DEFINED BY A CONDITION WHERE THE MAIN STAGE ROOF STRUCTURE IS FULLY ERECTED WITH NO WALL PANELS OR STAGE EQUIPMENT INSTALLED ON THE ROOF STRUCTURE.
 - B. A "FULLY ENCLOSED MAIN STAGE ROOF SYSTEM" SHALL BE DEFINED BY A CONDITION WHERE THE MAIN STAGE ROOF STRUCTURE IS FULLY ERECTED WITH SIDESTAGE OR BACKSTAGE WALL PANELS OR STAGE EQUIPMENT INSTALLED ON THE ROOF STRUCTURE.
 - C. WIND DESIGN SPEEDS FOR THE "OPEN" CONDITION AND THE "FULLY ENCLOSED" CONDITION ARE DEFINED IN THE "LOADS" SECTION, ABOVE.
2. THE PURPOSE OF THE HWAP IS TO ENSURE THAT ALL STRUCTURES IN THE STAGE BLOCK (STAGE, STAGE ROOF, SIDE STAGE SCAFFOLD TOWERS & BACKSTAGE) AREA WILL REMAIN SAFE DURING ALL WIND CONDITIONS.
 - A. A SAFE MEANS OF USING A LOWER WIND DESIGN SPEED FOR A FULLY ENCLOSED MAIN STAGE ROOF SYSTEM
 - B. THE HWAP PROVIDES A MEANS OF SAFELY RESPONDING TO INCREASING WIND LOAD DURING PERIODS OF VENUE OPERATION.
 - C. THE HWAP IS ONLY INTENDED TO PROVIDE A METHOD FOR REDUCING THE PROJECTED WIND AREA ON THE PERFORMANCE STAGE MAIN ROOF ONLY.
 - D. THE HWAP PERTAINS TO REMOVAL OF MAIN ROOF SIDE WALLS AND BACK WALLS ONLY.
 - E. THE HWAP SHALL BE IN FORCE AT ANY TIME WHEN THE MAIN STAGE ROOF SYSTEM FABRIC SIDEWALLS AND BACK WALLS ARE INSTALLED.
 - F. THE HWAP IS NOT REQUIRED WHEN THE MAIN STAGE ROOF SIDEWALLS AND BACKWALLS ARE NOT INSTALLED.
 3. THE FOLLOWING PROVISIONS MUST BE MET PRIOR TO IMPLEMENTATION OF THE HWAP;
 - A. THE FABRIC SIDEWALL AND BACKWALL INSTALLATION METHOD MUST ALLOW FOR THESE UNITS TO BE LOWERED IN A CONTROLLED FASHION IN LESS THAT 5 MINUTES FROM NOTICE OF PUTTING THE HWAP INTO ACTION.
 - B. SPECIFIC INSTALLATION DETAILS MUST BE APPROVED BY THE ENGINEER OF RECORD.
 4. HWAP TRAINING:
 - A. THE VENUE OPERATOR SHALL PROVIDE FOR HWAP TRAINING OR ENSURE THAT THE TRAINING IS PROVIDED BY OTHERS.
 - B. TRAINING SPECIFICS:

1. A DOCUMENTED RECORD OF TRAINING SHALL BE KEPT ON SITE AND IN THE VENUE OPERATORS GENERAL OFFICES.
 2. ALL HWAP TRAINED PERSONNEL SHALL BE RETRAINED AFTER A PERIOD OF 3 YEARS OR AFTER THEY HAVE NOT WORKED AT THE VENUE FOR A PERIOD OF 1 YEAR.
 3. A MOBILIZATION MEETING SHALL TAKE PLACE AT THE BEGINNING OF EACH EVENT TO DEFINE SPECIFIC RESPONSIBILITIES FOR ONSITE HWAP PERSONNEL.
 4. AN HWAP CREW MANAGER SHALL BE DESIGNATED DURING THE MOBILIZATION MEETING.
 5. THE HWAP CREW MANAGER SHALL HAVE AUTHORITY TO IMPLEMENT THE HWAP AT ANY TIME AND UNDER ANY CIRCUMSTANCES HE/SHE SEES FIT.
5. HIGH WIND ACTION PLAN:
- A. THE HWAP SHALL BE IN FORCE WHEN ANY OF THE FOLLOWING CONDITIONS OCCUR:
 1. FABRIC SIDEWALLS AND/OR BACKWALLS ARE INSTALLED ON THE MAIN STAGE ROOF SYSTEM.
 2. THE VENUE IS BEING USED FOR AN EVENT.
 - a. AN EVENT SHALL BE DEFINED AS ANY CONCERT, REHEARSAL, RENTAL OR ANY OTHER PROFESSIONAL OR COMMERCIAL USE OF THE STAGE SPACE BY ANY PARTY THAT IN ANY WAY REQUIRES USE OF STAGING EQUIPMENT TO BE ATTACHED TO THE MAIN STAGE ROOF STRUCTURE.
 - b. EXCEPTION:
 - (1) ANY EXCEPTION SHALL BE ALLOWED IF THE EQUIPMENT INSTALLED ON THE MAIN ROOF UNIT PRESENTS A PROJECTED WIND AREA OF LESS THAN 2% OF THE BARE ROOF AREA AND
 - (2) NO SIDEWALLS OR BACKWALLS OF ANY KIND ARE INSTALLED ON THE MAIN STAGE ROOF SYSTEM.
 - B. THE HWAP SHALL GOVERN OPERATING CONDITIONS DURING A TIME PERIOD THAT SHALL COMMENCE AT THE BEGINNING OF PRE-EVENT OPERATIONS AND SHALL CONTINUE TO SUCH TIME WHEN ALL PERSONNEL AND EQUIPMENT HAVE BEEN REMOVED FROM THE VENUE AT THE CLOSE OF THE SPECIFIC EVENT.
 - C. MONITORING OF SITE WIND CONDITIONS: ACTIVE ON SITE WIND MONITORING SHALL BE MAINTAINED FOR THE DURATION OF THE MAIN STAGE ROOF SYSTEM ERECTION UNLESS THE WALL PANELS ARE LOWERED TO REDUCE WIND PRESSURE.

1. WIND SPEED MONITORING (ANEMOMETERS): ACTIVE ON-SITE WIND MONITORING SHALL CONSIST ANEMOMETERS ERECTED AT AN ELEVATION WITHIN 5' +/- OF THE HIGHEST COMPONENT OF THE MAIN STAGE ROOF SYSTEM. THE ANEMOMETER SHALL NOT BE LOCATED ON THE ROOF SYSTEM OR ITEMS WITHIN THE STAGE BLOCK (THE ONSTAGE AND BACKSTAGE AREAS). THE ANEMOMETER SHALL BE INSTALLED AT A HORIZONTAL DISTANCE OF BETWEEN 50' AND 250' AWAY FROM THE BASE OF THE ROOF SYSTEM.
 2. LOCAL WEATHER SERVICE MONITORING: REAL-TIME MONITORING OF A LOCAL LINK TO THE NATIONAL WEATHER SERVICE (THIS MAY BE A LINK TO A LOCAL COMMERCIAL OR GOVERNMENT SERVICE) SHALL BE MAINTAINED BY THE HWAP CREW.
 3. ACCESS DURING MONITORING: ACCESS IN THE VICINITY OF THE ROOF STRUCTURE SHALL ONLY BE ALLOWED WHILE MONITORING IS MAINTAINED.
- D. THE FOLLOWING HIGH-WIND ACTION PLAN MUST BE POSTED IN A CONSPICUOUS AREA ON SITE. IT MUST BE PROTECTED FROM THE WEATHER AND AVAILABLE AT ALL TIMES TO VENUE OPERATORS AND CREW AND ANY AUTHORITY HAVING JURISDICTION RELATING TO THESE MATTERS.
1. WHEN WIND GUSTS EXCEED 20 MPH: MOBILIZE THE HWAP CREW AND HAVE THE NECESSARY PERSONNEL IN PLACE AND ON STANDBY. REMOVE THE LOWER THIRD PORTION OF THE WALL PANELS.
 2. WHEN WIND GUSTS EXCEED 25 MPH: REMOVE THE MIDDLE THIRD PORTION OF THE WALL PANELS.
 3. WHEN WIND GUSTS EXCEED 35 MPH: REMOVE THE REMAINDER OF THE WALL PANELS.
 4. WHEN WIND GUSTS EXCEED 40 MPH: ALL WALL PANELS AND ROOF PANELS MUST BE FULLY LOWERED AND SECURED AT GROUND LEVEL. IF WALL PANELS HAVE NOT BEEN REMOVED WHEN WIND SPEED EXCEEDS 40 MPH, ALL PERSONNEL SHOULD MAINTAIN A SAFE CLEAR DISTANCE FROM THE ROOF SYSTEM AS COLLAPSE OF THE ROOF MAY OCCUR.
 5. ONCE WALL PANELS HAVE BEEN REMOVED FROM THE ROOF SYSTEM, THE STAGE BLOCK STRUCTURES ARE SAFE FOR THE FULL DESIGN WIND SPEED WITH REDUCTION FACTOR.
 6. DO NOT LOWER ROOF SYSTEM DURING CONDITIONS OF HIGH WIND.

4

3

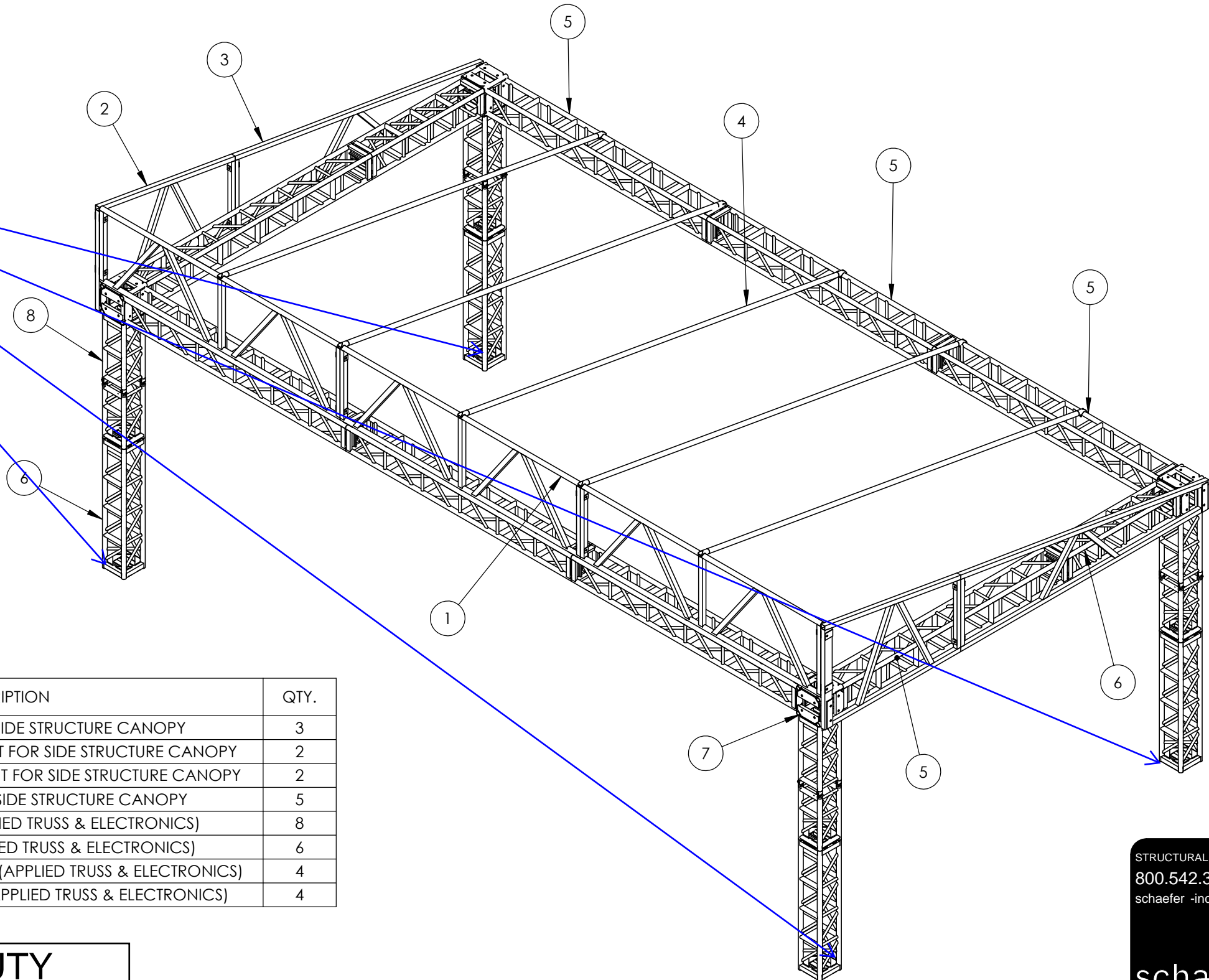
2

1

B

B

PROVIDE BALLAST AND RIGGING STRAPS WITH A MINIMUM LOAD OF 1500 POUNDS PER POST



ITEM NO.	DWG/JB PART NUMBER	DESCRIPTION	QTY.
1	AP5040AC07-01	RECTANGLE TRUSS FOR SIDE STRUCTURE CANOPY	3
2	AP5040AC05-01	UPPER TRUSS FRAME WELDMENT FOR SIDE STRUCTURE CANOPY	2
3	AP5040AC06-01	LOWER TRUSS FRAME WELDMENT FOR SIDE STRUCTURE CANOPY	2
4	AP5040AC09-01	ROOF CROSS TUBE FOR SIDE STRUCTURE CANOPY	5
5	9-12-120	12 X 12 X 10FT TRUSS (APPLIED TRUSS & ELECTRONICS)	8
6	9-12-060	12 X 12 X 5FT TRUSS (APPLIED TRUSS & ELECTRONICS)	6
7	9-12-006	12 X 12 6-WAY CORNER BLOCK (APPLIED TRUSS & ELECTRONICS)	4
8	GS-12-HBA	12 X 12 X 5FT HINGED TRUSS (APPLIED TRUSS & ELECTRONICS)	4

A

A

ALL BOX TRUSS IS HEAVY DUTY APPLIED TRUSS. SCRIM ALLOWED ON THREE SIDES AND ROOF, SEE HIGH WIND ACTION PLAN FOR REMOVAL OF CLADDING.

STRUCTURAL ENGINEERS
800.542.3302
schaefer -inc.com

schaefer

REV	DATE	BY	DESCRIPTION	DRAWN	JWB	3/22/2023	TITLE:	DWG. NO.	REV.	0	SIZE	B
				CHECKED			5040 SIDE STRUCTURE CANOPY	AP5040AC08-01				
				APPROVED								
				SCALE	NONE							
				SHEET	1 OF 3							
				MATERIAL								
				COMPANY	N/A							
<small>This material is the property of Progressive Products Inc. and should not be reproduced, published, or disclosed to others without authorization. The material shall not be used in any way against or detrimental to Progressive Products Inc., Pittsburg, KS. All rights reserved.</small>				PROGRESSIVE PRODUCTS INC. 3305 AIRPORT CIRCLE PITTSBURG, KS 66762 P: (620)-235-1712 F: (620)-235-1772								

4

3

2

1

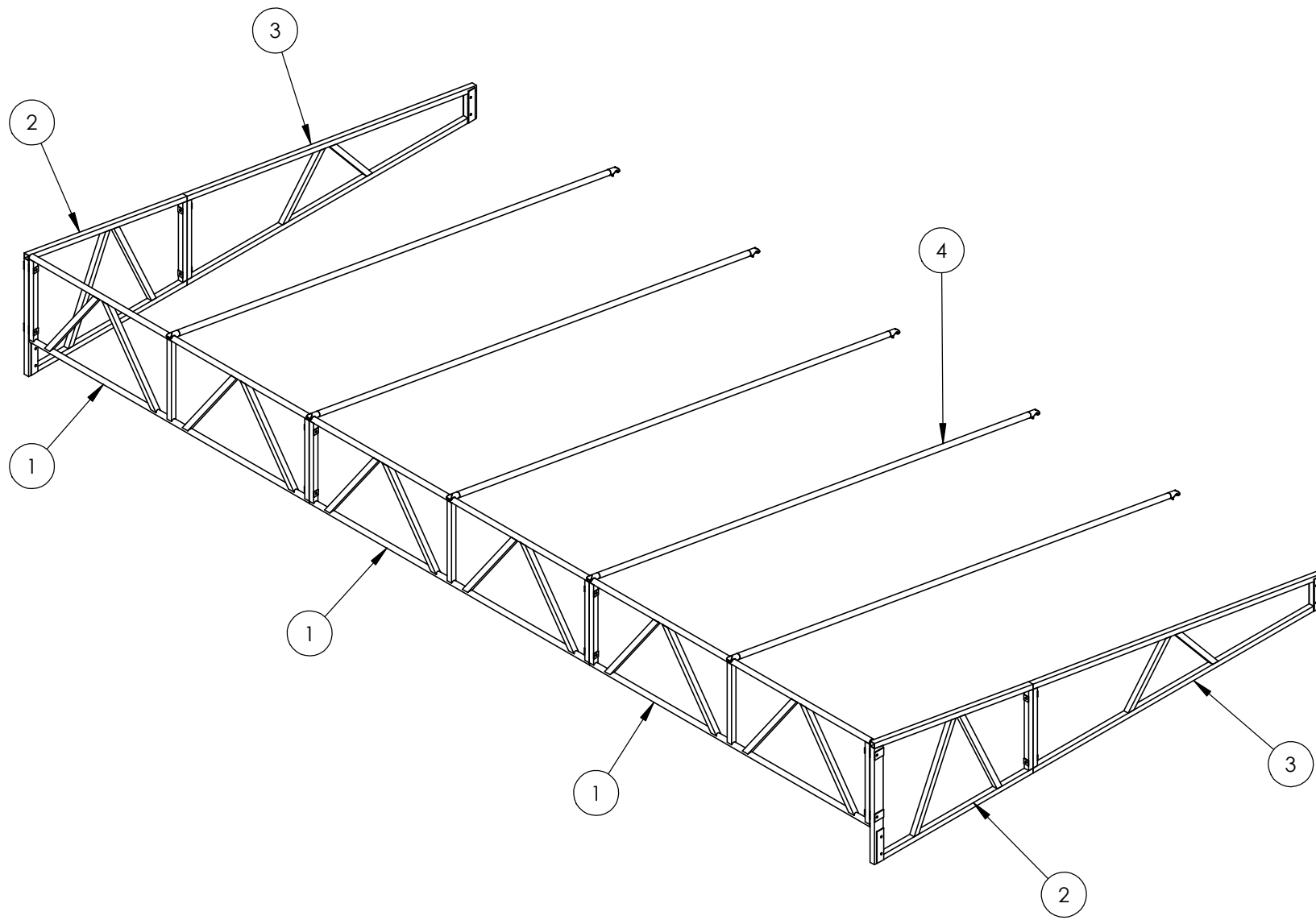
4

3

2

1

ITEM NO.	PART NUMBER	DESCRIPTION	QTY.
1	AP5040AC07-01	RECTANGLE TRUSS FOR SIDE STRUCTURE CANOPY	3
2	AP5040AC05-01	UPPER TRUSS FRAME WELDMNT FOR SIDE STRUCTURE CANOPY	2
3	AP5040AC06-01	LOWER TRUSS FRAME WELDMNT FOR SIDE STRUCTURE CANOPY	2
4	AP5040AC09	ROOF CROSS TUBE FOR SIDE STRUCTURE CANOPY	5



STRUCTURAL ENGINEERS
 800.542.3302
 schaefer -inc.com

schaefer

REV	DATE	BY	DESCRIPTION	DRAWN	JWB	3/22/2023	TITLE: 5040 SIDE STRUCTURE CANOPY ROOF		
				CHECKED			DWG. NO. AP5040AC08-01		
				APPROVED			REV. 0		
				SCALE	NONE		SIZE B		
				SHEET	2 OF 3		PROGRESSIVE PRODUCTS INC.		
				MATERIAL			3305 AIRPORT CIRCLE		
				COMPANY	N/A		PITTSBURG, KS 66762		
This material is the property of Progressive Products Inc. and should not be reproduced, published, or disclosed to others without authorization. The material shall not be used in any way against or detrimental to Progressive Products Inc., Pittsburg, KS. All rights reserved.				PROGRESSIVE PRODUCTS INC. 3305 AIRPORT CIRCLE PITTSBURG, KS 66762 P: (620)-235-1712 F: (620)-235-1772					

4

3

2

1

B

B

A

A

4

3

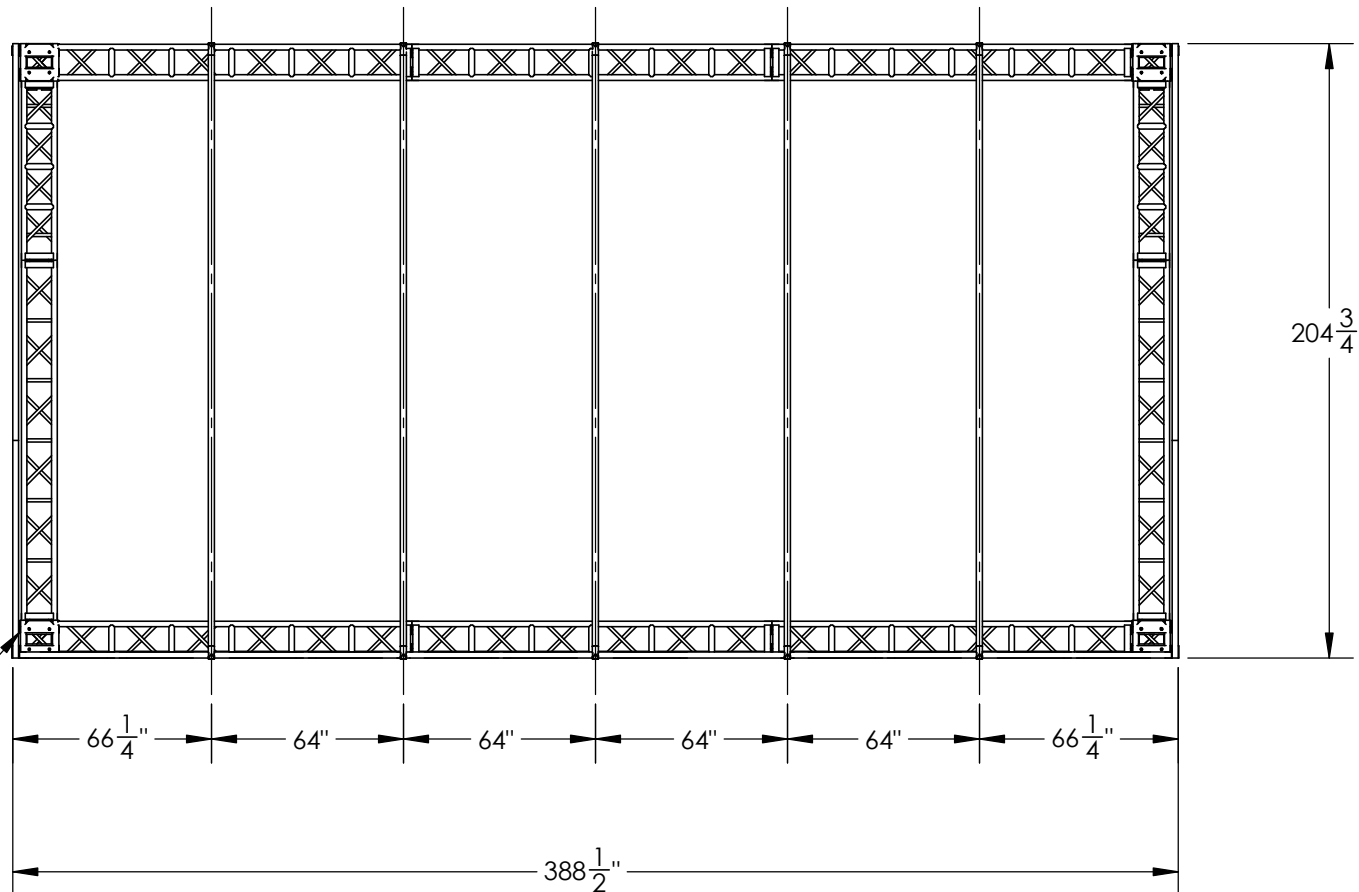
2

1

B

B

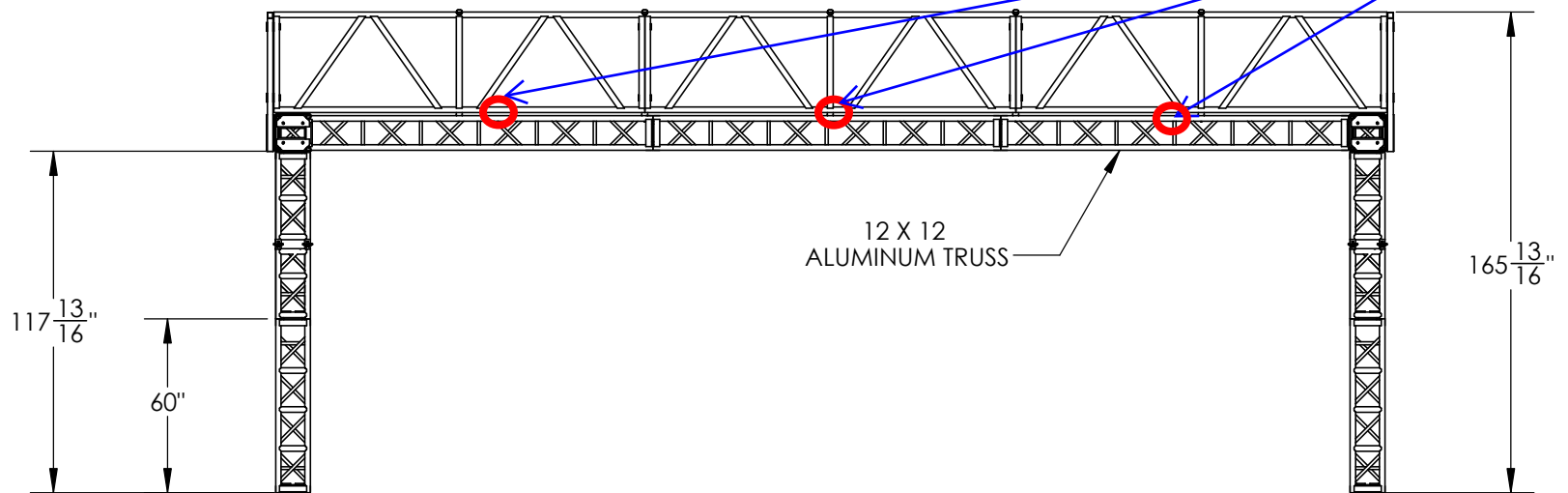
12" X 12" 6-WAY ALUMINUM TRUSS BLOCK



INSTALL 1/2 COUPLERS BETWEEN BOTTOM CHORD TRUSS AND BOX TRUSS AT THIRD POINTS. MINIMUM RATED WORKING LOAD = 650 LBS.

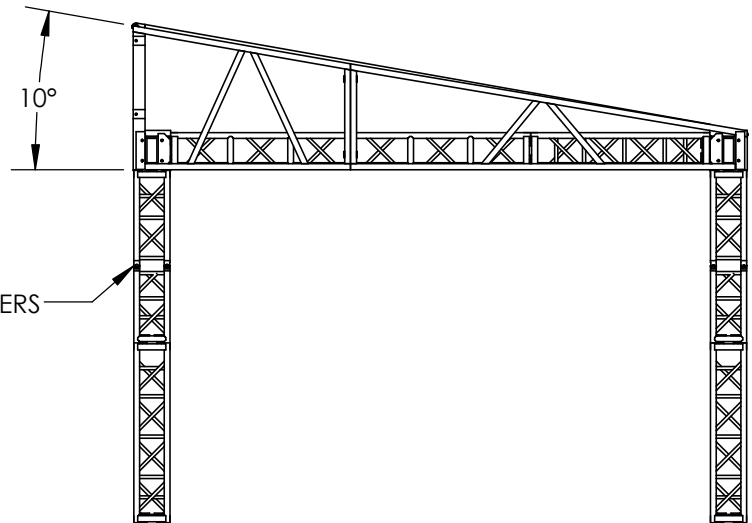
A

A



12 X 12 ALUMINUM TRUSS

HINGED JOINT TYP ALL FOUR CORNER TOWERS



STRUCTURAL ENGINEERS
800.542.3302
schaefer-inc.com

schaefer

REV	DATE	ECO#	DESCRIPTION

DRAWN	
CHECKED	
APPROVED	
SCALE	NONE
SHEET	3 OF 3
MATERIAL	
COMPANY	N/A

TITLE:
5040 SIDE STRUCTURE CANOPY

DWG. NO. AP5040AC08-03 REV. 0

This material is the property of Progressive Products Inc. and should not be reproduced, published, or disclosed to others without authorization. The material shall not be used in any way against or detrimental to Progressive Products Inc., Pittsburg, KS. All rights reserved.

PROGRESSIVE PRODUCTS INC.
3305 AIRPORT CIRCLE
PITTSBURG, KS 66762
P: (620)-235-1712 F: (620)-235-1772



SIZE
B

4

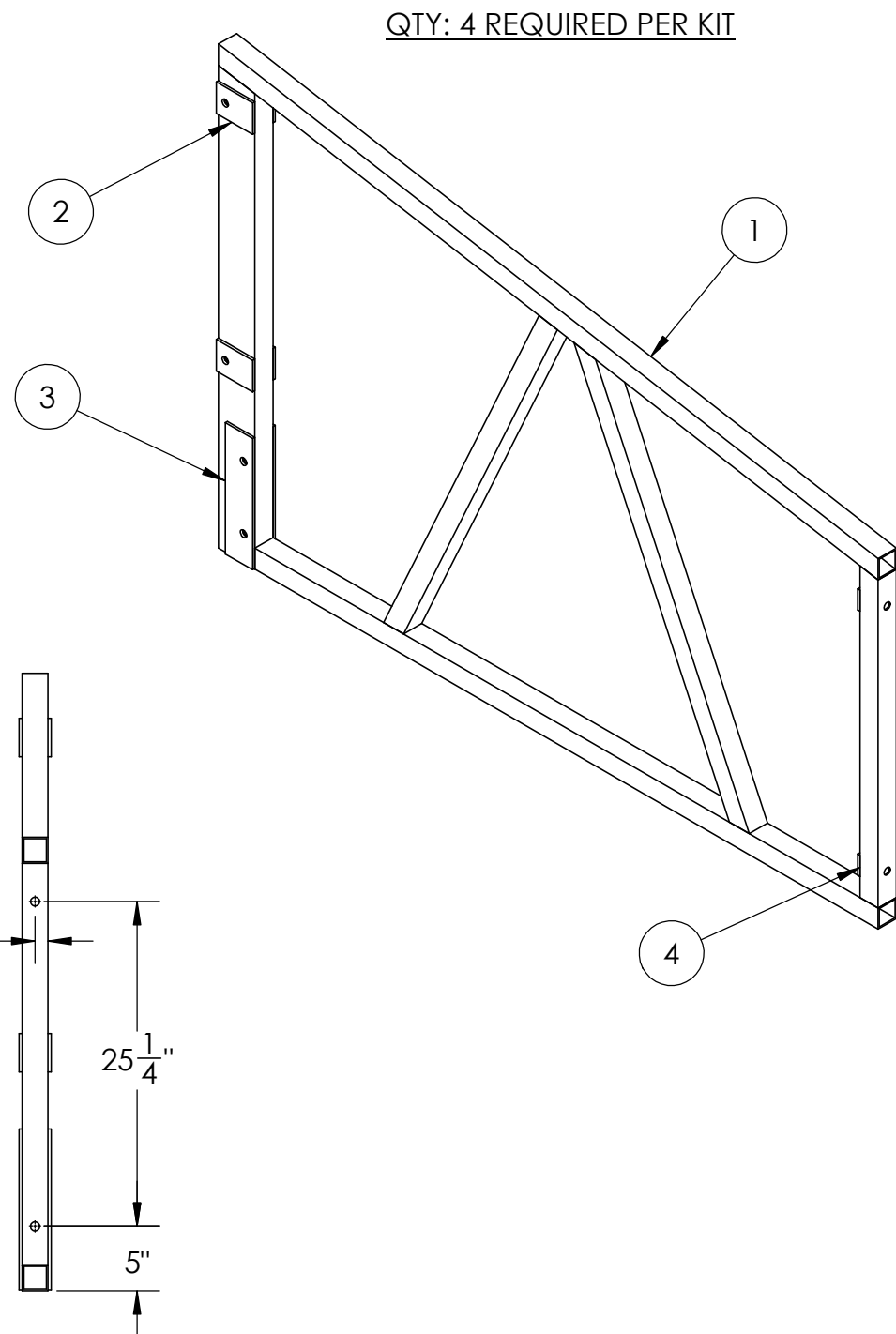
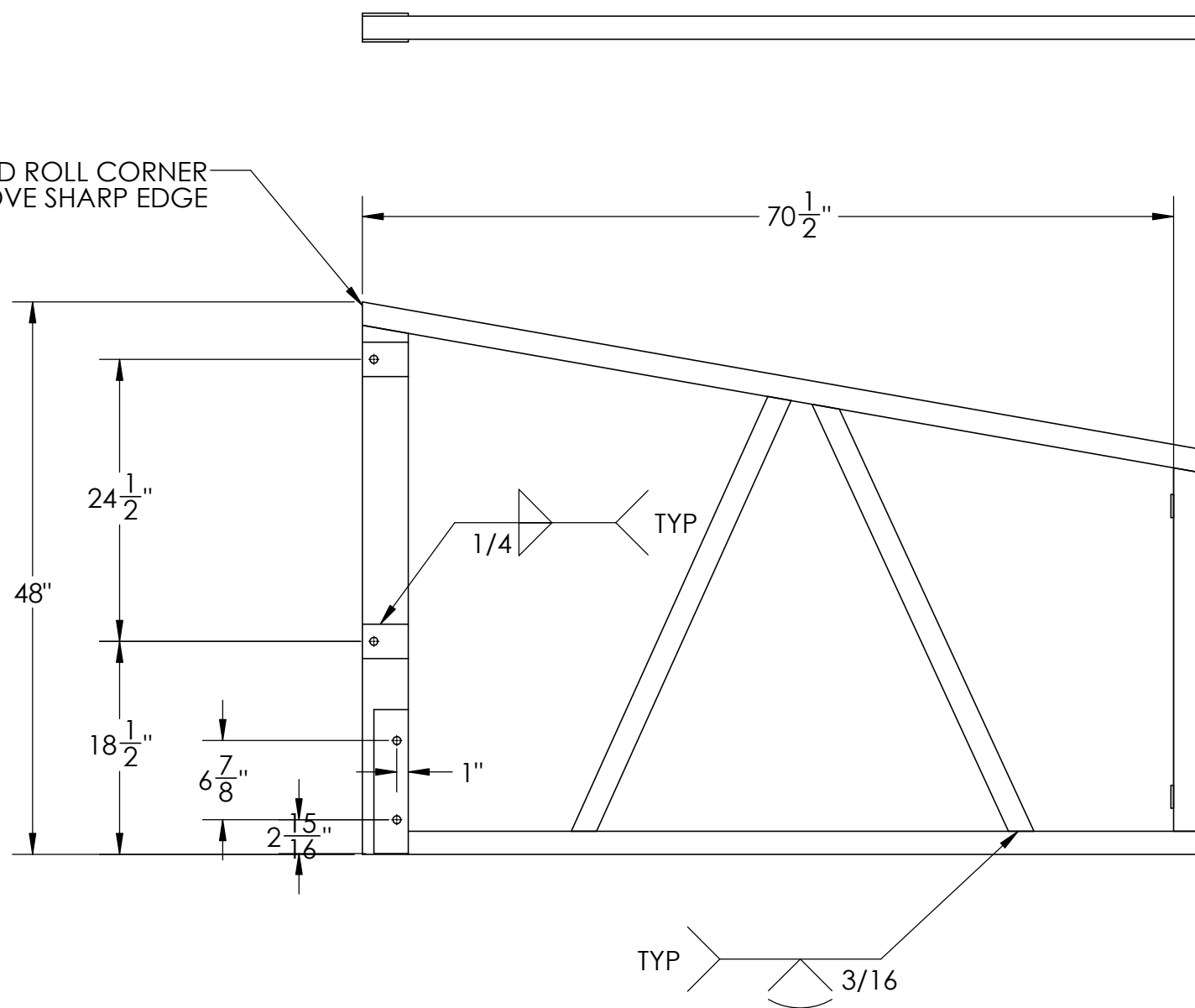
3

2

1

ITEM NO.	PART NUMBER	DESCRIPTION	QTY.
1	AP5040AC05-02	UPPER TRUSS FRAME FOR SIDE STRUCTURE	1
2	AP5040AC05-03	3" X 1/4" AL FLAT BAR	4
3	AP5040AC05-04	3" X 1/4" AL FLAT BAR	2
4	AP5040AC05-05	2" X 1/4" AL FLAT BAR	2

CUT OUT WEDGE AND ROLL CORNER OVER TO REMOVE SHARP EDGE



UNLESS OTHERWISE SPECIFIED
FRACTIONAL ANGLES ±1/16"

STRUCTURAL ENGINEERS
800.542.3302
schaefer-inc.com

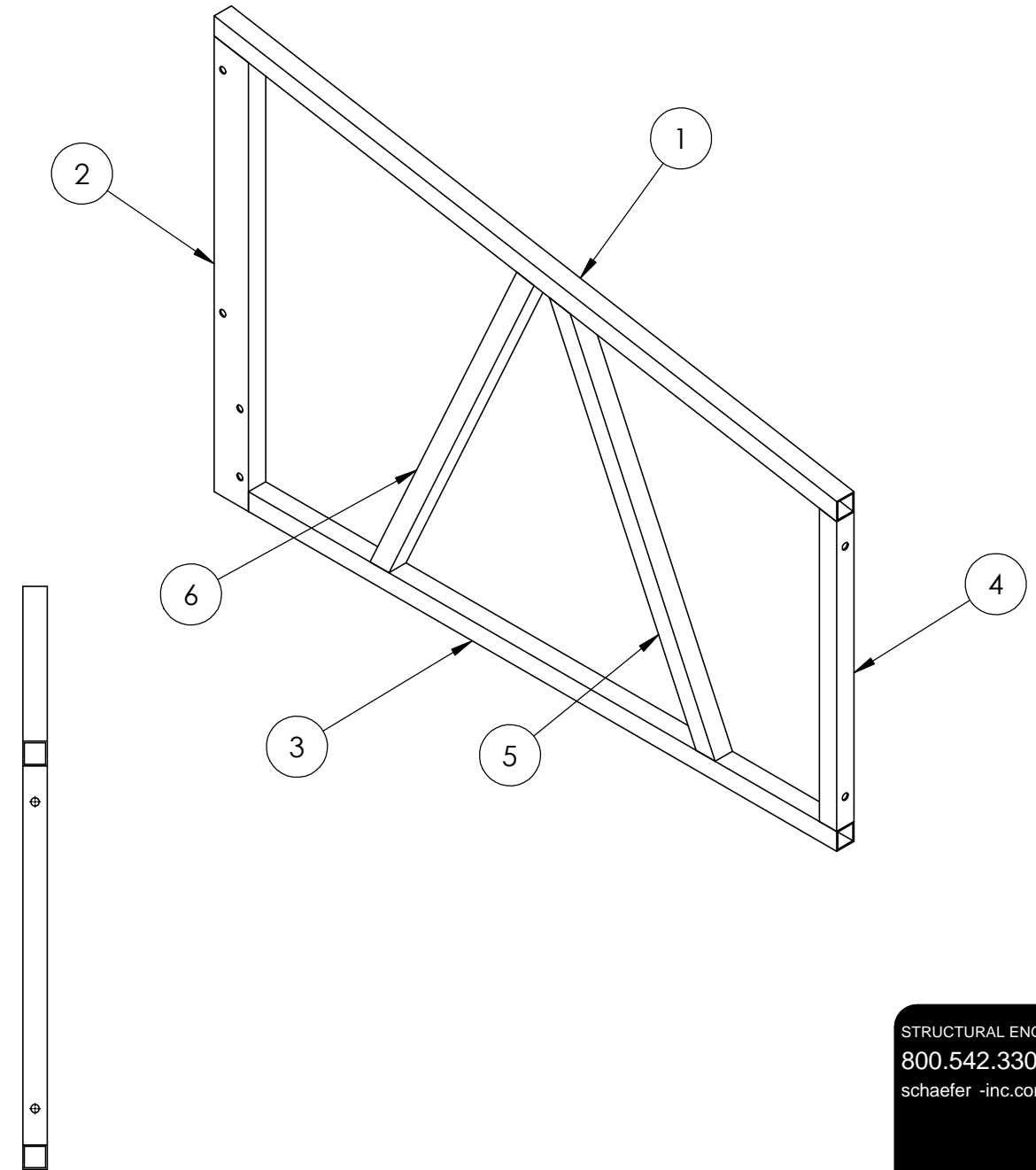
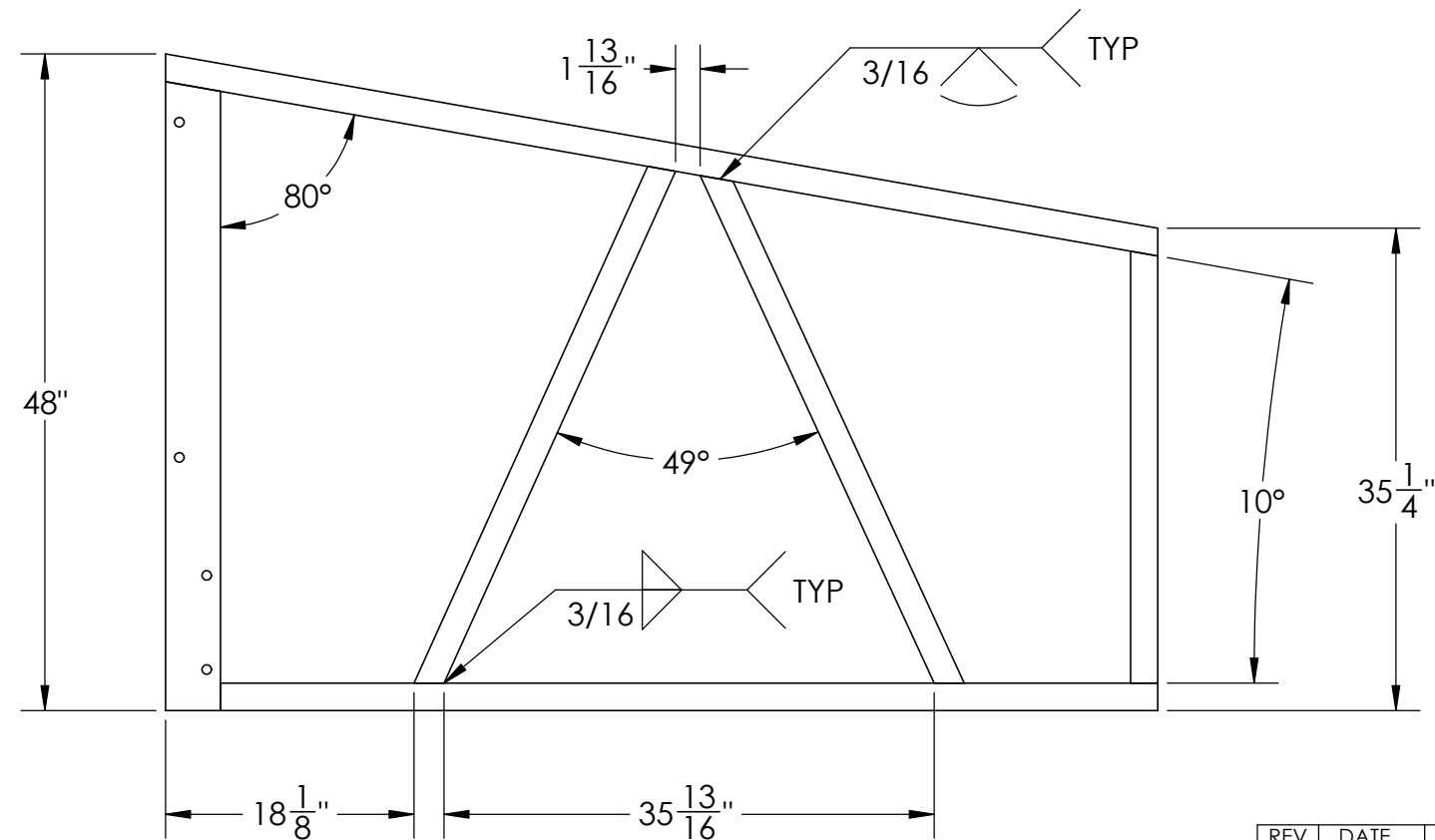
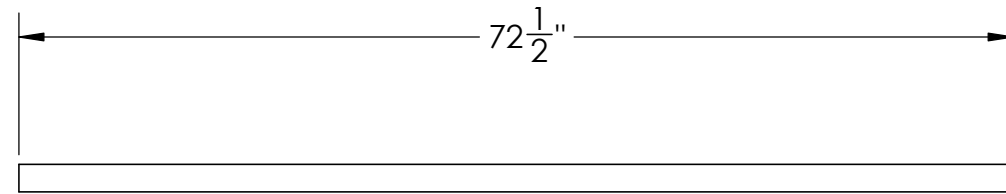
schaefer

REV	DATE	ECO#	DESCRIPTION	DRAWN	CHECKED	APPROVED	SCALE	SHEET	MATERIAL	COMPANY	TITLE:	DWG. NO.	REV.	SIZE
							NONE	1 OF 11		N/A	UPPER TRUSS FRAME WELDMENT FOR SIDE STRUCTURE	AP5040AC05-01	0	B
This material is the property of Progressive Products Inc. and should not be reproduced, published, or disclosed to others without authorization. The material shall not be used in any way against or detrimental to Progressive Products Inc., Pittsburg, KS. All rights reserved.											PROGRESSIVE PRODUCTS INC. 3305 AIRPORT CIRCLE PITTSBURG, KS 66762 P: (620)-235-1712 F: (620)-235-1772			

ITEM NO.	PART NUMBER	DESCRIPTION	QTY.
1	AP5040AC05-06	2 X 2X 1/8 SQ. TUBE	1
2	AP5040AC05-07	2 X 4 X 1/8 RECT. TUBE	1
3	AP5040AC05-08	2 X 2X 1/8 SQ. TUBE	1
4	AP5040AC05-09	2 X 2X 1/8 SQ. TUBE	1
5	AP5040AC05-10	2 X 2X 1/8 SQ. TUBE	1
6	AP5040AC05-11	2 X 2X 1/8 SQ. TUBE	1

NOTES:
1. SEE DRAWINGS FOR CUT DETAILS

QTY: 4 REQUIRED PER KIT



STRUCTURAL ENGINEERS
800.542.3302
schaefer-inc.com
schaefer

UNLESS OTHERWISE SPECIFIED
FRACTIONAL ANGLES ±1/16" ±1°

REV	DATE	ECO#	DESCRIPTION	DRAWN	JWB	3/14/2023	TITLE: UPPER TRUSS FRAME FOR SIDE STRUCTURE		
				CHECKED			DWG. NO. AP5040AC05-02		
				APPROVED			REV. 0		
				SCALE	NONE		SIZE B		
				SHEET	2 OF 11		PROGRESSIVE PRODUCTS INC.		
				MATERIAL			3305 AIRPORT CIRCLE		
				COMPANY	N/A		PITTSBURG, KS 66762		
This material is the property of Progressive Products Inc. and should not be reproduced, published, or disclosed to others without authorization. The material shall not be used in any way against or detrimental to Progressive Products Inc., Pittsburg, KS. All rights reserved.				P: (620)-235-1712 F: (620)-235-1772					

4

3

2

1

QTY: 16

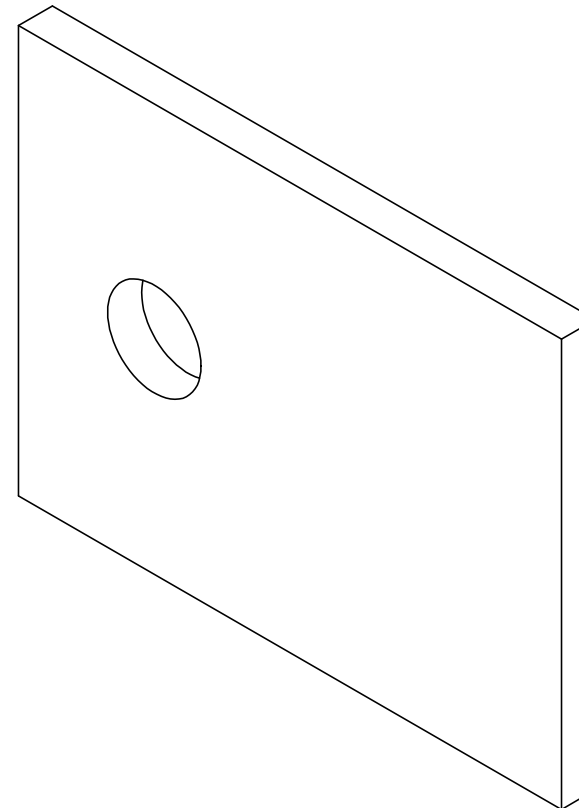
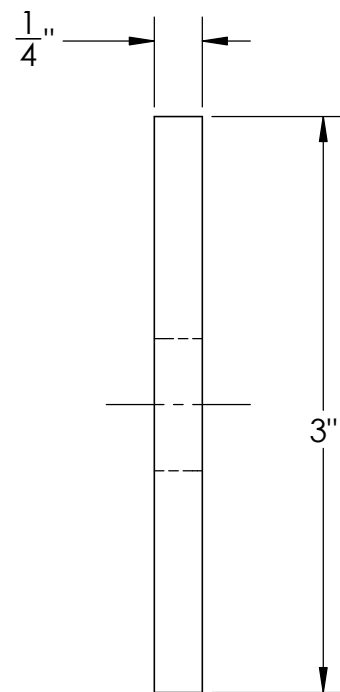
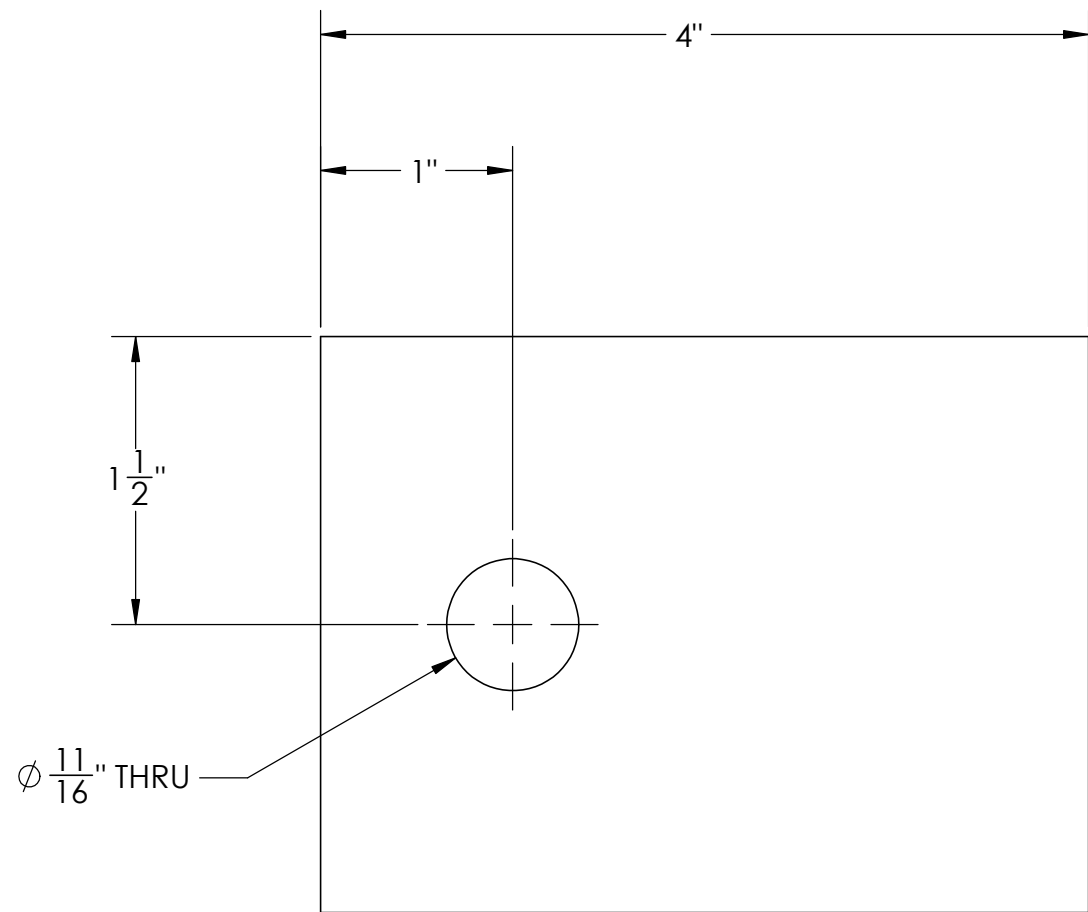
MATERIAL: 3 X 1/4 AL FLAT BAR 6061-T6

B

B

A

A



STRUCTURAL ENGINEERS
800.542.3302
schaefer -inc.com

schaefer

REV	DATE	ECO#	DESCRIPTION	DRAWN	CHECKED	APPROVED	SCALE	SHEET	MATERIAL	COMPANY	TITLE:	DWG. NO.	REV.	SIZE
							NONE	3 OF 11		N/A	3" X 1/4" AL FLAT BAR	AP5040AC05-03	0	B
This material is the property of Progressive Products Inc. and should not be reproduced, published, or disclosed to others without authorization. The material shall not be used in any way against or detrimental to Progressive Products Inc., Pittsburg, KS. All rights reserved.											PROGRESSIVE PRODUCTS INC. 3305 AIRPORT CIRCLE PITTSBURG, KS 66762 P: (620)-235-1712 F: (620)-235-1772			

UNLESS OTHERWISE SPECIFIED
FRACTIONAL $\pm 1/16$ "
ANGLES $\pm 1^\circ$

4

3

2

1

4

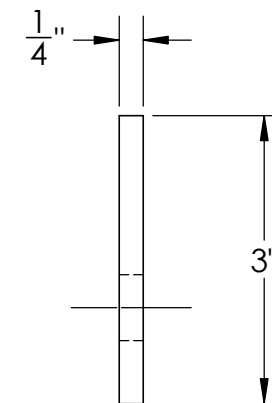
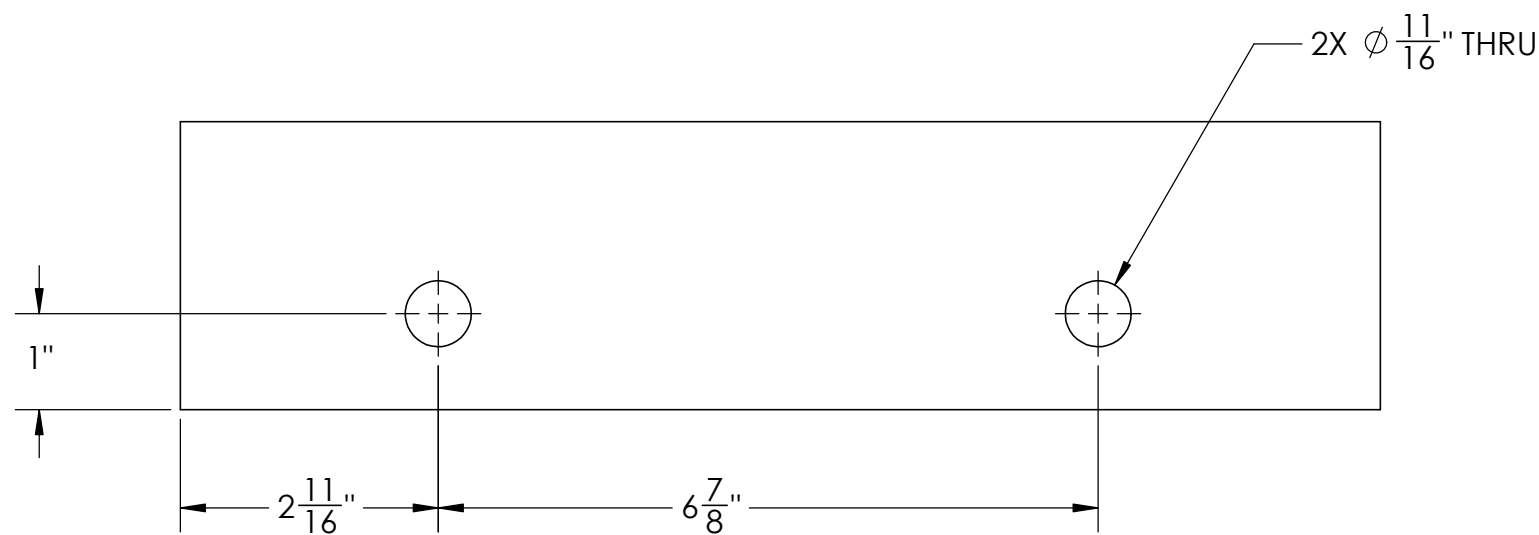
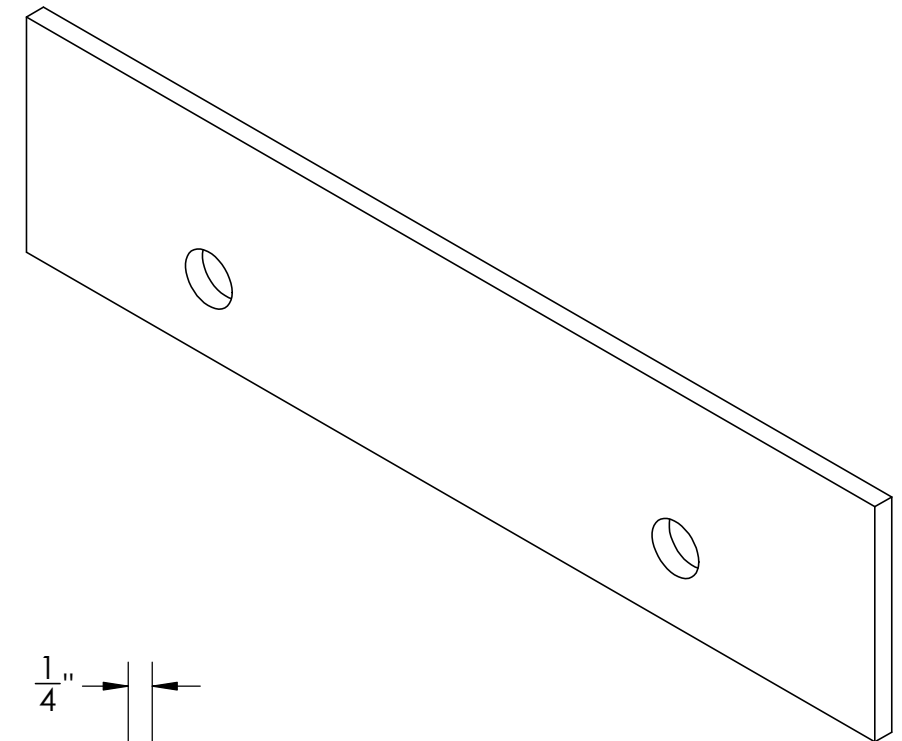
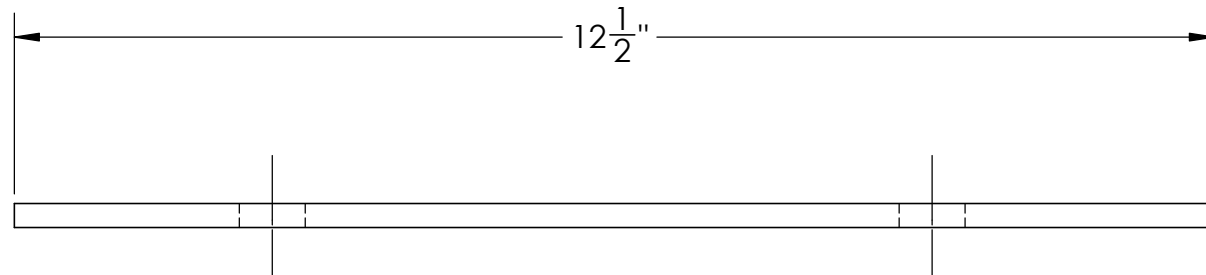
3

2

1

QTY: 16

MATERIAL: 3 X 1/4 AL FLAT BAR 6061-T6



B

B

A

A

STRUCTURAL ENGINEERS
800.542.3302
schaefer -inc.com

schaefer

REV	DATE	ECO#	DESCRIPTION	DRAWN	CHECKED	APPROVED	SCALE	SHEET	MATERIAL	COMPANY	TITLE:	DWG. NO.	REV.	SIZE	
							NONE	4 OF 11		N/A	3" X 1/4" AL FLAT BAR	AP5040AC05-04	0	B	
<small>This material is the property of Progressive Products Inc. and should not be reproduced, published, or disclosed to others without authorization. The material shall not be used in any way against or detrimental to Progressive Products Inc., Pittsburg, KS. All rights reserved.</small>											PROGRESSIVE PRODUCTS INC. 3305 AIRPORT CIRCLE PITTSBURG, KS 66762 P: (620)-235-1712 F: (620)-235-1772				

UNLESS OTHERWISE SPECIFIED
 FRACTIONAL ±1/16"
 ANGLES ±1°

4

3

2

1

4

3

2

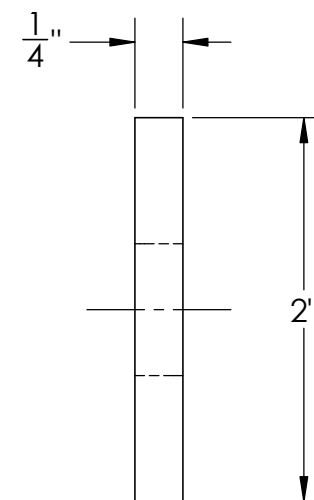
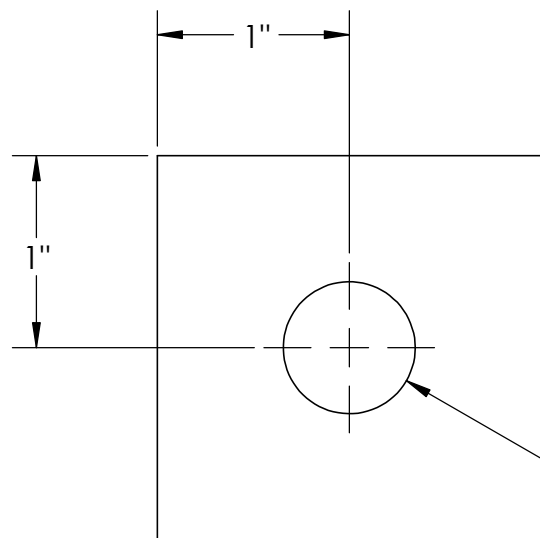
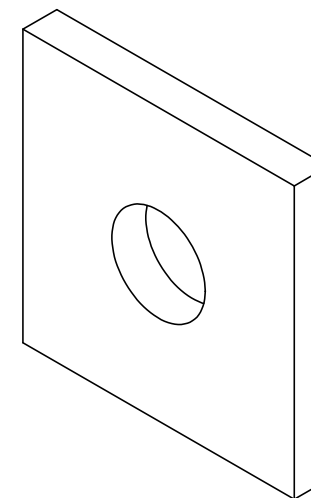
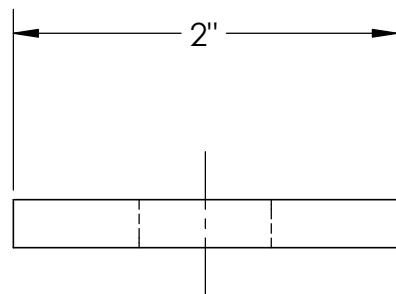
1

QTY: 16

MATERIAL: 2 X 1/4 AL FLAT BAR 6061-T6

B

B



A

A

UNLESS OTHERWISE SPECIFIED
 FRACTIONAL $\pm 1/16$ "
 ANGLES $\pm 1^\circ$

STRUCTURAL ENGINEERS
 800.542.3302
 schaefer -inc.com

schaefer

REV	DATE	ECO#	DESCRIPTION	DRAWN	CHECKED	APPROVED	SCALE	SHEET	MATERIAL	COMPANY	TITLE:	DWG. NO.	REV.	SIZE
							NONE	5 OF 11		N/A	2" X 1/4" AL FLAT BAR	AP5040AC05-05	0	B
This material is the property of Progressive Products Inc. and should not be reproduced, published, or disclosed to others without authorization. The material shall not be used in any way against or detrimental to Progressive Products Inc., Pittsburg, KS. All rights reserved.											PROGRESSIVE PRODUCTS INC. 3305 AIRPORT CIRCLE PITTSBURG, KS 66762 P: (620)-235-1712 F: (620)-235-1772			

4

3

2

1

4

3

2

1

QTY: 4

MATERIAL: 2 X 2 X 1/8 AL SQ. TUBE 6061-T6

B

B

73-1/2"

10°

10°

2 X 2 X 1/8
SQ. AL TUBE


A

A

STRUCTURAL ENGINEERS
800.542.3302
schaefer-inc.com

schaefer

UNLESS OTHERWISE SPECIFIED
FRACTIONAL ±1/16"
ANGLES ±1°

REV	DATE	ECO#	DESCRIPTION	DRAWN	JWB	3/14/2023	TITLE: 2 X 2 X 1/8 SQ. TUBE			
				CHECKED						
				APPROVED						
				SCALE	NONE					
				SHEET	6 OF 11					
				MATERIAL			DWG. NO.	AP5040AC05-06	REV.	0
				COMPANY	N/A					
This material is the property of Progressive Products Inc. and should not be reproduced, published, or disclosed to others without authorization. The material shall not be used in any way against or detrimental to Progressive Products Inc., Pittsburg, KS. All rights reserved.				PROGRESSIVE PRODUCTS INC. 3305 AIRPORT CIRCLE PITTSBURG, KS 66762 P: (620)-235-1712 F: (620)-235-1772					SIZE	B

4

3

2

1

4

3

2

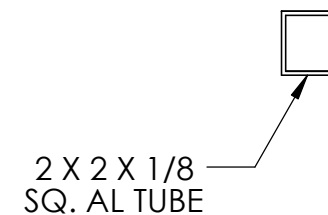
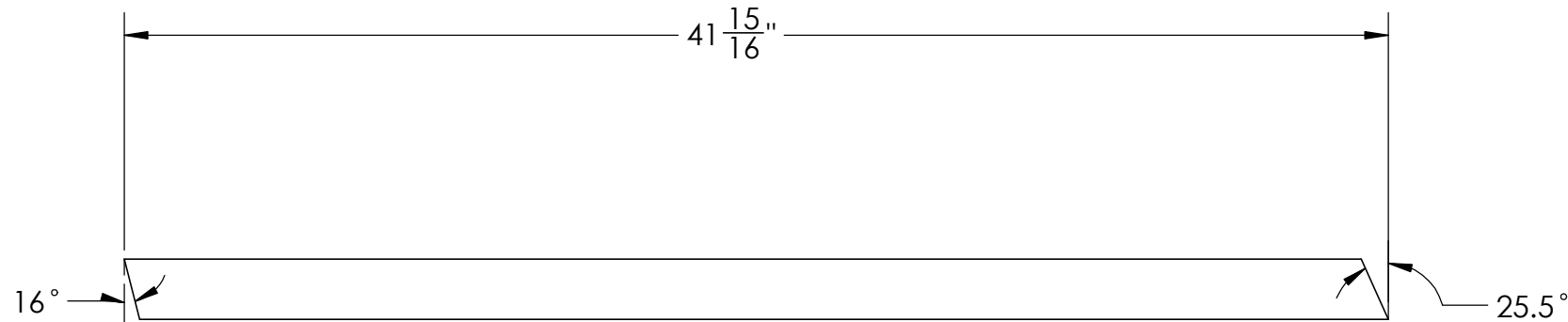
1

B

B

QTY: 4

MATERIAL: 2 X 2 X 1/8 AL SQ. TUBE



A

A

STRUCTURAL ENGINEERS
800.542.3302
schaefer-inc.com

UNLESS OTHERWISE SPECIFIED
FRACTIONAL $\pm 1/16$ "
ANGLES $\pm 1^\circ$

REV	DATE	ECO#	DESCRIPTION	DRAWN	JWB	3/14/2023	TITLE: 2 X 2 X 1/8 SQ. TUBE			
				CHECKED						
				APPROVED						
				SCALE	NONE					
				SHEET	7 OF 11					
				MATERIAL						
				COMPANY	N/A		DWG. NO.	AP5040AC5-07	REV.	0
<small>This material is the property of Progressive Products Inc. and should not be reproduced, published, or disclosed to others without authorization. The material shall not be used in any way against or detrimental to Progressive Products Inc., Pittsburg, KS. All rights reserved.</small>				PROGRESSIVE PRODUCTS INC. 3305 AIRPORT CIRCLE PITTSBURG, KS 66762 P: (620)-235-1712 F: (620)-235-1772					SIZE	B

4

3

2

1

4

3

2

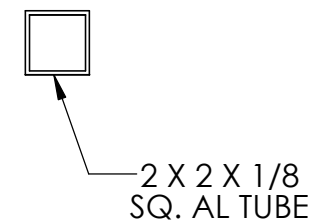
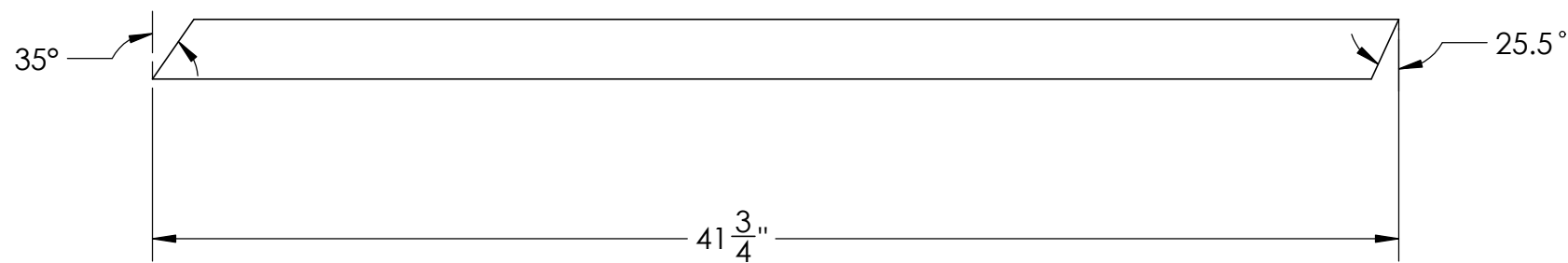
1

B

B

QTY: 4

MATERIAL: 2 X 2 X 1/8 AL SQ. TUBE



A

A

UNLESS OTHERWISE SPECIFIED
 FRACTIONAL ±1/16"
 ANGLES ±1°



REV	DATE	ECO#	DESCRIPTION	DRAWN	JWB	3/14/2023	TITLE: 2 X 2 X 1/8 SQ. TUBE			
				CHECKED						
				APPROVED						
				SCALE	NONE					
				SHEET	8 OF 11					
				MATERIAL						
				COMPANY	N/A		DWG. NO.	AP5040AC05-08	REV.	0
<small>This material is the property of Progressive Products Inc. and should not be reproduced, published, or disclosed to others without authorization. The material shall not be used in any way against or detrimental to Progressive Products Inc., Pittsburg, KS. All rights reserved.</small>				PROGRESSIVE PRODUCTS INC. 3305 AIRPORT CIRCLE PITTSBURG, KS 66762 P: (620)-235-1712 F: (620)-235-1772					SIZE B	

4

3

2

1

4

3

2

1

QTY: 4

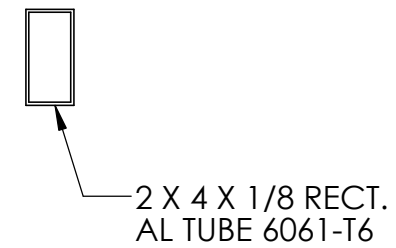
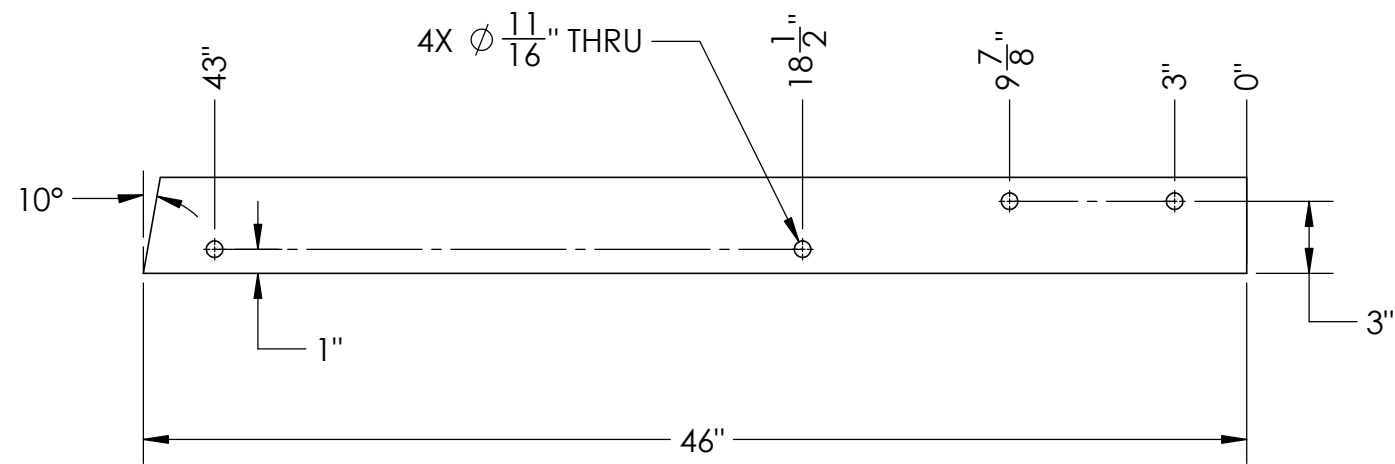
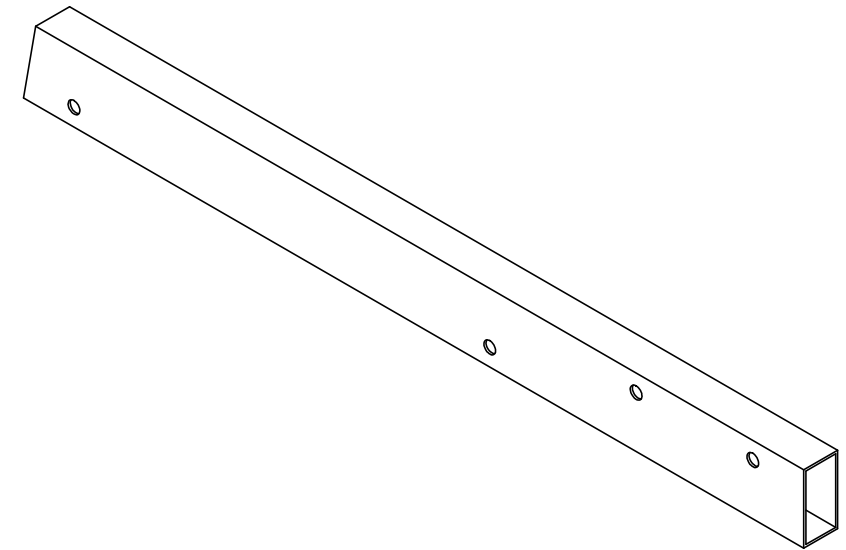
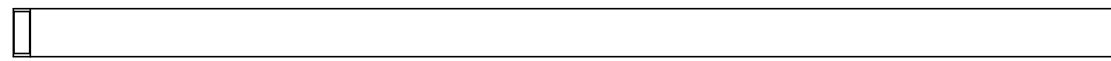
MATERIAL: 2 X 4 X 1/8 AL SQ. TUBE

B

B

A

A



UNLESS OTHERWISE SPECIFIED

FRACTIONAL ANGLES $\pm 1/16$ " $\pm 1^\circ$

STRUCTURAL ENGINEERS
800.542.3302
schaefer-inc.com

REV	DATE	ECO#	DESCRIPTION	DRAWN	JWB	3/14/2023	TITLE: 2 X 4 X 1/8 RECT. TUBE			
				CHECKED						
				APPROVED						
				SCALE	NONE					
				SHEET	9 OF 11					
				MATERIAL						
				COMPANY	N/A		DWG. NO.	AP5040AC05-09	REV.	0
<small>This material is the property of Progressive Products Inc. and should not be reproduced, published, or disclosed to others without authorization. The material shall not be used in any way against or detrimental to Progressive Products Inc., Pittsburg, KS. All rights reserved.</small>				PROGRESSIVE PRODUCTS INC. 3305 AIRPORT CIRCLE PITTSBURG, KS 66762 P: (620)-235-1712 F: (620)-235-1772					SIZE	B

4

3

2

1

4

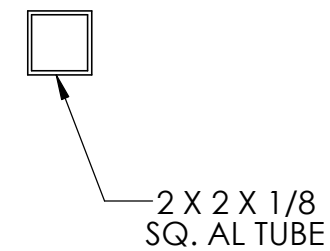
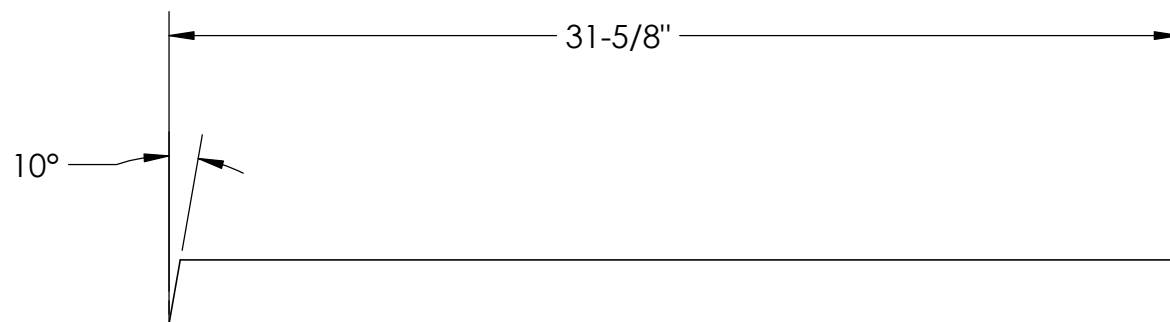
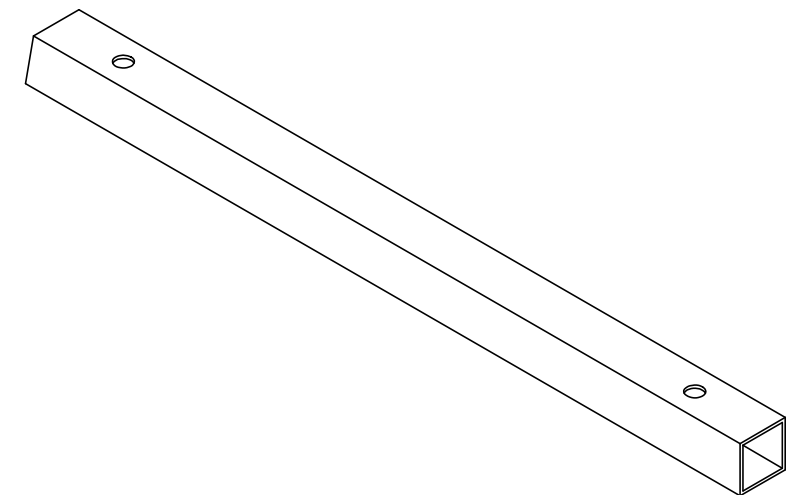
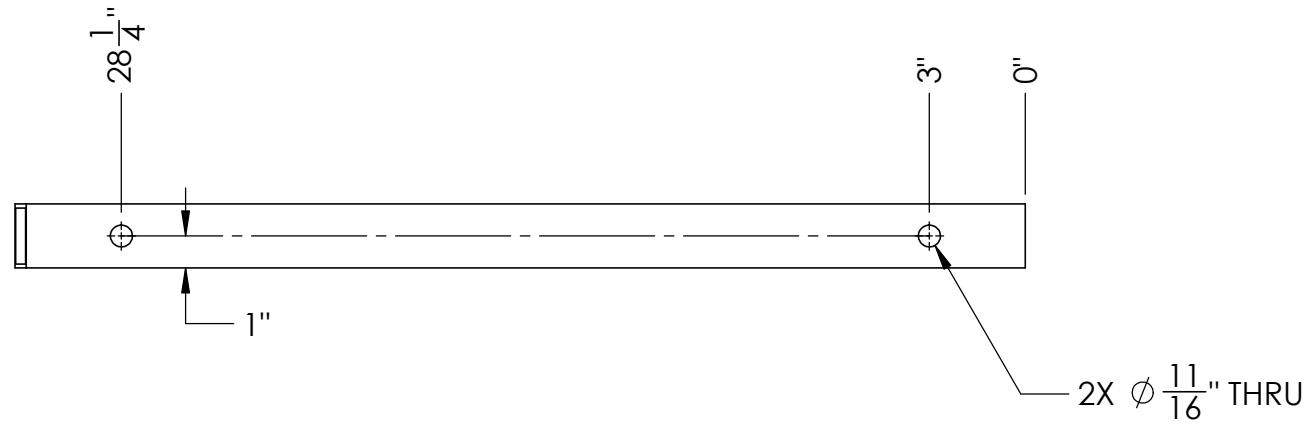
3

2

1

QTY: 4

MATERIAL: 2 X 2 X 1/8 AL SQ. TUBE



UNLESS OTHERWISE SPECIFIED
 FRACTIONAL ±1/16"
 ANGLES ±1°

STRUCTURAL ENGINEERS
 800.542.3302
 schaefer -inc.com

schaefer

REV	DATE	ECO#	DESCRIPTION	DRAWN	JWB	3/14/2023	TITLE: 2 X 2 X 1/8 SQ. TUBE			
				CHECKED						
				APPROVED						
				SCALE	NONE					
				SHEET	10 OF					
				MATERIAL	11		DWG. NO.	AP5040AC05-10	REV.	0
				COMPANY	N/A					SIZE
This material is the property of Progressive Products Inc. and should not be reproduced, published, or disclosed to others without authorization. The material shall not be used in any way against or detrimental to Progressive Products Inc., Pittsburg, KS. All rights reserved.				PROGRESSIVE PRODUCTS INC. 3305 AIRPORT CIRCLE PITTSBURG, KS 66762 P: (620)-235-1712 F: (620)-235-1772					B	

4

3

2

1

4

3

2

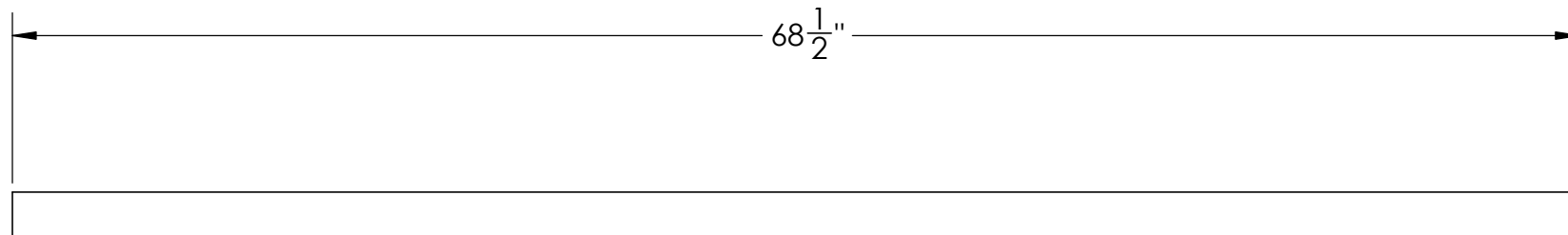
1

B

B

QTY: 4

MATERIAL: 2 X 2 X 1/8 AL SQ. TUBE



2 X 2 X 1/8
SQ. AL TUBE

A

A

UNLESS OTHERWISE SPECIFIED
FRACTIONAL ±1/16"
ANGLES ±1°

STRUCTURAL ENGINEERS
800.542.3302
schaefer -inc.com

REV	DATE	ECO#	DESCRIPTION	DRAWN	JWB	3/14/2023	TITLE: 2 X 2 X 1/8 RECT. TUBE			
				CHECKED						
				APPROVED						
				SCALE	NONE					
				SHEET	11 OF					
				MATERIAL	11		DWG. NO.	AP5040AC05-11	REV.	0
				COMPANY	N/A					
<small>This material is the property of Progressive Products Inc. and should not be reproduced, published, or disclosed to others without authorization. The material shall not be used in any way against or detrimental to Progressive Products Inc., Pittsburg, KS. All rights reserved.</small>				PROGRESSIVE PRODUCTS INC. 3305 AIRPORT CIRCLE PITTSBURG, KS 66762 P: (620)-235-1712 F: (620)-235-1772					SIZE	B

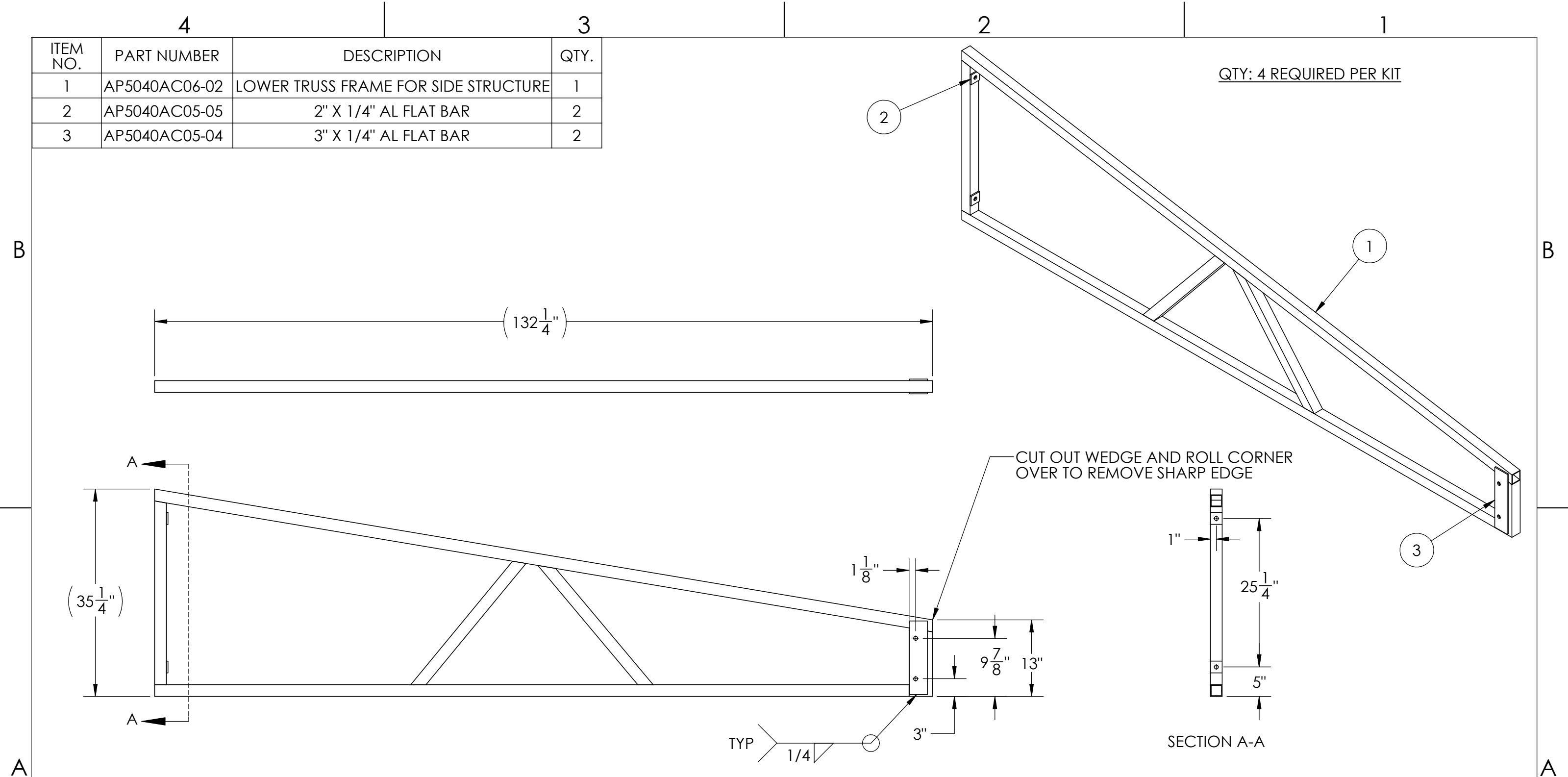
4

3

2

1

ITEM NO.	PART NUMBER	DESCRIPTION	QTY.
1	AP5040AC06-02	LOWER TRUSS FRAME FOR SIDE STRUCTURE	1
2	AP5040AC05-05	2" X 1/4" AL FLAT BAR	2
3	AP5040AC05-04	3" X 1/4" AL FLAT BAR	2



STRUCTURAL ENGINEERS
800.542.3302
schaefer-inc.com

schaefer

REV	DATE	ECO#	DESCRIPTION

DRAWN	
CHECKED	
APPROVED	
SCALE	NONE
SHEET	1 OF 8
MATERIAL	
COMPANY	N/A

TITLE: LOWER TRUSS FRAME WELDMENT FOR SIDE STRUCTURE		
DWG. NO.	AP5040AC06-01	REV. 0

UNLESS OTHERWISE SPECIFIED
FRACTIONAL ANGLES ±1/16" ±1°

This material is the property of Progressive Products Inc. and should not be reproduced, published, or disclosed to others without authorization. The material shall not be used in any way against or detrimental to Progressive Products Inc., Pittsburg, KS. All rights reserved.

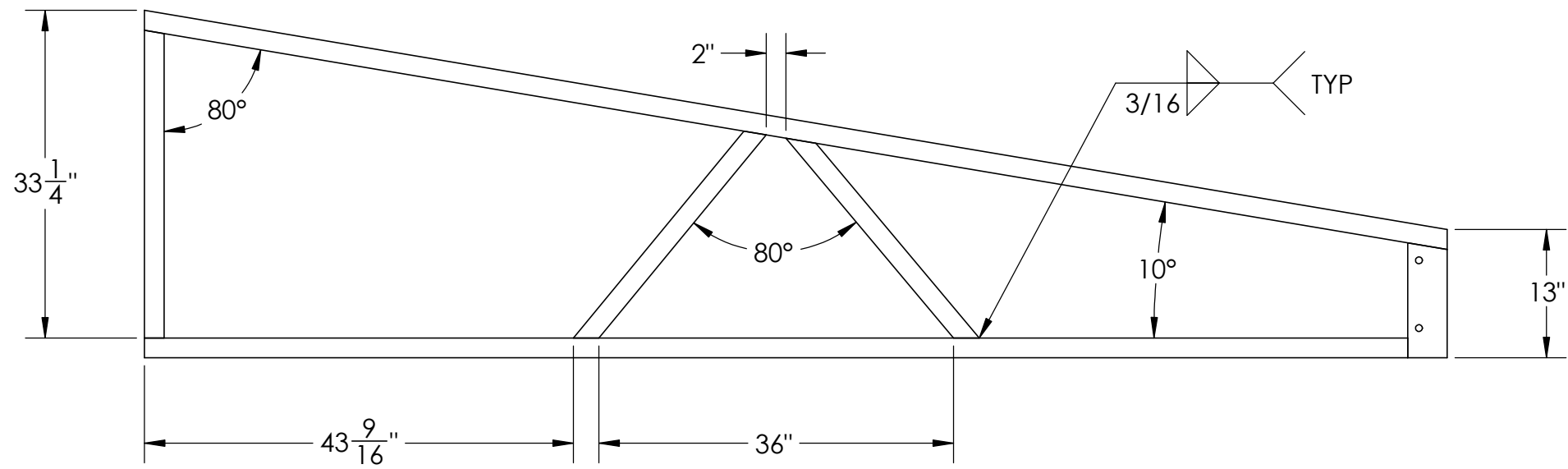
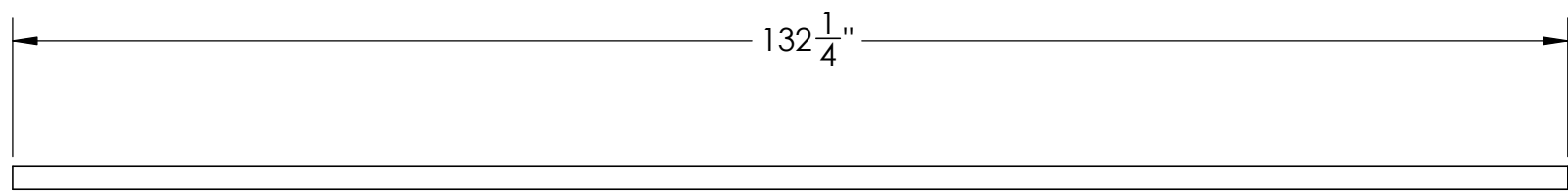
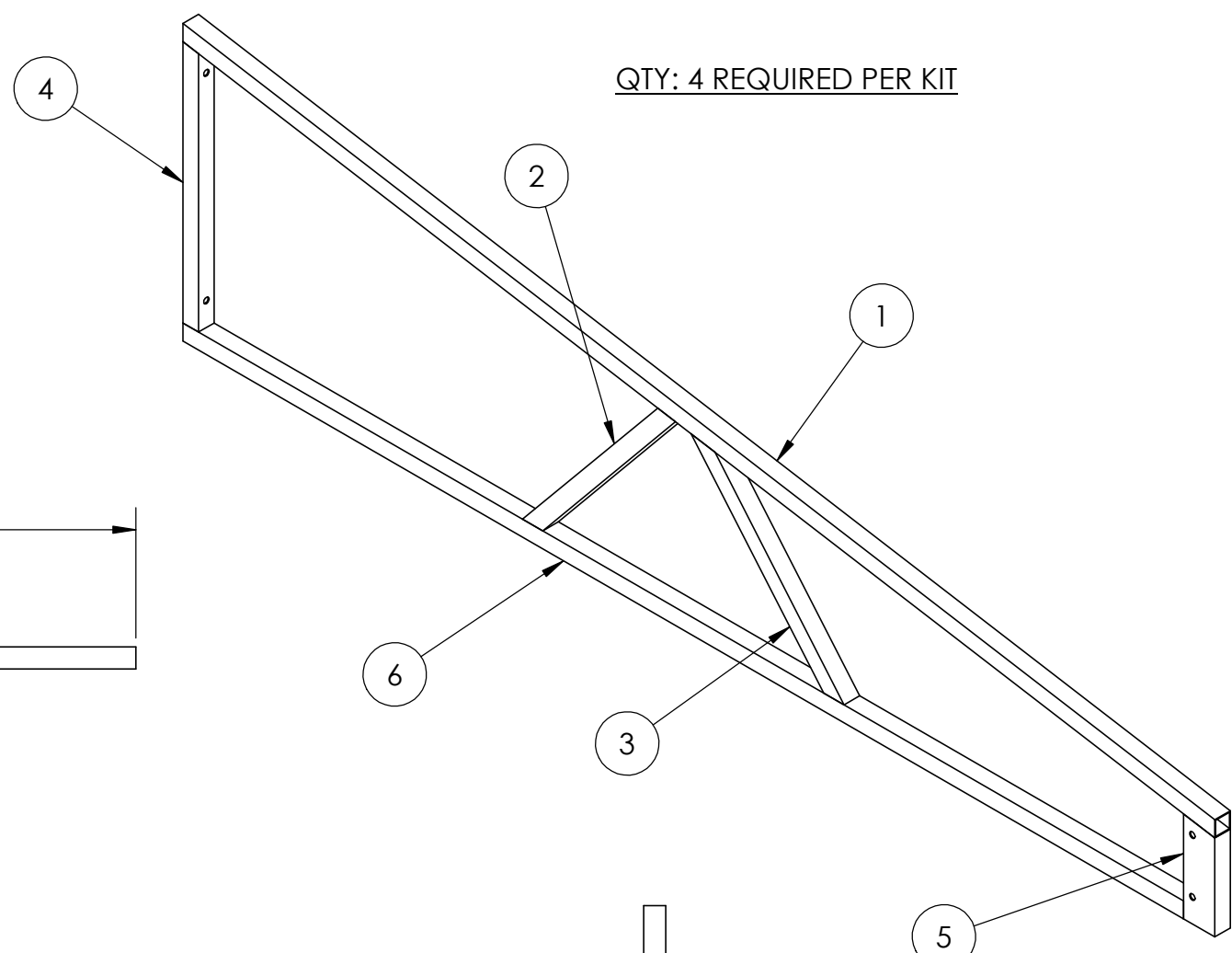
PROGRESSIVE PRODUCTS INC.
3305 AIRPORT CIRCLE
PITTSBURG, KS 66762
P: (620)-235-1712 F: (620)-235-1772



SIZE
B

ITEM NO.	PART NUMBER	DESCRIPTION	QTY.
1	AP5040AC06-03	2 X 2X 1/8 SQ. TUBE	1
2	AP5040AC06-04	2 X 2X 1/8 SQ. TUBE	1
3	AP5040AC06-05	2 X 2X 1/8 SQ. TUBE	1
4	AP5040AC06-06	2 X 4 X 1/8 RECT. TUBE	1
5	AP5040AC06-07	2 X 2X 1/8 SQ. TUBE	1
6	AP5040AC06-08	2 X 2X 1/8 SQ. TUBE	1

NOTES:
1. SEE DRAWINGS FOR CUT DETAILS



B

B

A

A

STRUCTURAL ENGINEERS
800.542.3302
schaefer-inc.com

REV	DATE	ECO#	DESCRIPTION	DRAWN	JWB	3/14/2023	TITLE: LOWER TRUSS FRAME FOR SIDE STRUCTURE		
				CHECKED			DWG. NO. AP5040AC06-02		
				APPROVED			REV. 0		
				SCALE	NONE		SIZE B		
				SHEET	2 OF 8		PROGRESSIVE PRODUCTS INC.		
				MATERIAL			3305 AIRPORT CIRCLE		
				COMPANY	N/A		PITTSBURG, KS 66762		
This material is the property of Progressive Products Inc. and should not be reproduced, published, or disclosed to others without authorization. The material shall not be used in any way against or detrimental to Progressive Products Inc., Pittsburg, KS. All rights reserved.				PROGRESSIVE PRODUCTS INC. 3305 AIRPORT CIRCLE PITTSBURG, KS 66762 P: (620)-235-1712 F: (620)-235-1772					

UNLESS OTHERWISE SPECIFIED
FRACTIONAL ANGLES ±1/16" ±1°

4

3

2

1

4

3

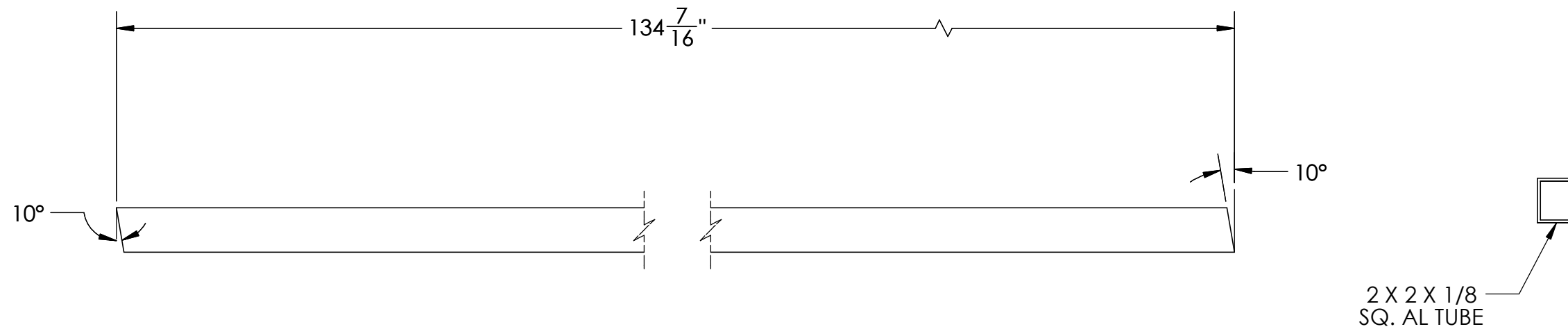
2

1

QTY: 4
MATERIAL: 2 X 2 X 1/8 AL SQ. TUBE

B

B



A

A

UNLESS OTHERWISE SPECIFIED
 FRACTIONAL ANGLES ±1/16"
 ANGLES ±1°

STRUCTURAL ENGINEERS
 800.542.3302
 schaefer -inc.com

schaefer

REV	DATE	ECO#	DESCRIPTION	DRAWN	JWB	3/14/2023	TITLE: 2 X 2 X 1/8 SQ. TUBE			
				CHECKED						
				APPROVED						
				SCALE	NONE					
				SHEET	3 OF 8					
				MATERIAL						
				COMPANY	N/A		DWG. NO.	AP5040AC06-03	REV.	0
<small>This material is the property of Progressive Products Inc. and should not be reproduced, published, or disclosed to others without authorization. The material shall not be used in any way against or detrimental to Progressive Products Inc., Pittsburg, KS. All rights reserved.</small>				PROGRESSIVE PRODUCTS INC. 3305 AIRPORT CIRCLE PITTSBURG, KS 66762 P: (620)-235-1712 F: (620)-235-1772					SIZE	B

4

3

2

1

4

3

2

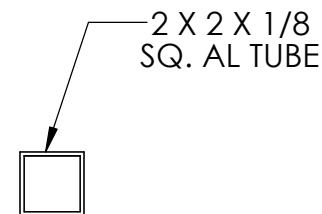
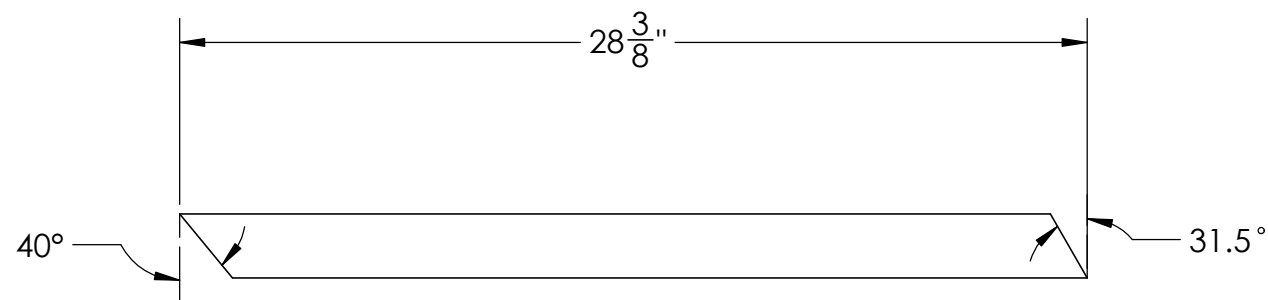
1

B

B

QTY: 4

MATERIAL: 2 X 2 X 1/8 AL SQ. TUBE



A

A

STRUCTURAL ENGINEERS
800.542.3302
schaefer -inc.com

schaefer

UNLESS OTHERWISE SPECIFIED

FRACTIONAL ±1/16"
ANGLES ±1°

REV	DATE	ECO#	DESCRIPTION	DRAWN	JWB	3/14/2023	TITLE: 2 X 2 X 1/8 SQ. TUBE			
				CHECKED						
				APPROVED						
				SCALE	NONE					
				SHEET	4 OF 8					
				MATERIAL						
				COMPANY	N/A		DWG. NO.	AP5040AC06-04	REV.	0
<small>This material is the property of Progressive Products Inc. and should not be reproduced, published, or disclosed to others without authorization. The material shall not be used in any way against or detrimental to Progressive Products Inc., Pittsburg, KS. All rights reserved.</small>				PROGRESSIVE PRODUCTS INC. 3305 AIRPORT CIRCLE PITTSBURG, KS 66762 P: (620)-235-1712 F: (620)-235-1772					SIZE	B

4

3

2

1

4

3

2

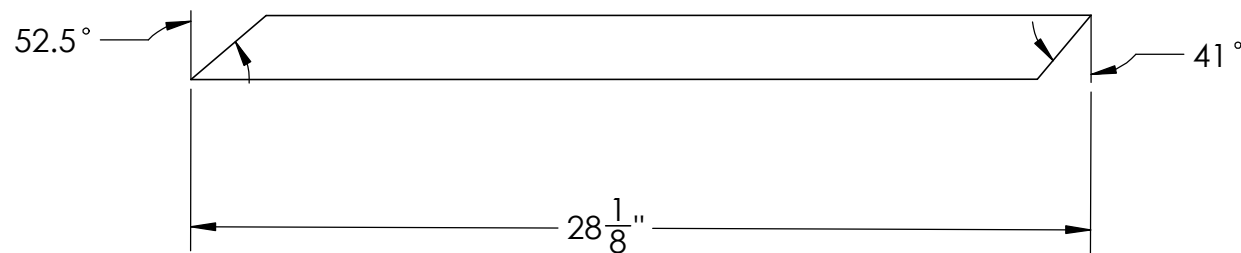
1

B

B

QTY: 4

MATERIAL: 2 X 2 X 1/8 AL SQ. TUBE



2 X 2 X 1/8
SQ. AL TUBE

A

A

STRUCTURAL ENGINEERS
800.542.3302
schaefer -inc.com

UNLESS OTHERWISE SPECIFIED
FRACTIONAL ±1/16"
ANGLES ±1°

REV	DATE	ECO#	DESCRIPTION	DRAWN	JWB	3/14/2023	TITLE: 2 X 2 X 1/8 SQ. TUBE			
				CHECKED						
				APPROVED						
				SCALE	NONE					
				SHEET	5 OF 8					
				MATERIAL						
				COMPANY	N/A		DWG. NO.	AP5040AC06-05	REV.	0
<small>This material is the property of Progressive Products Inc. and should not be reproduced, published, or disclosed to others without authorization. The material shall not be used in any way against or detrimental to Progressive Products Inc., Pittsburg, KS. All rights reserved.</small>				PROGRESSIVE PRODUCTS INC. 3305 AIRPORT CIRCLE PITTSBURG, KS 66762 P: (620)-235-1712 F: (620)-235-1772					SIZE	B

4

3

2

1

4

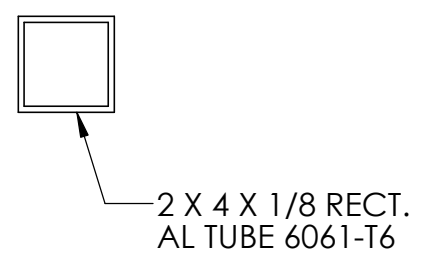
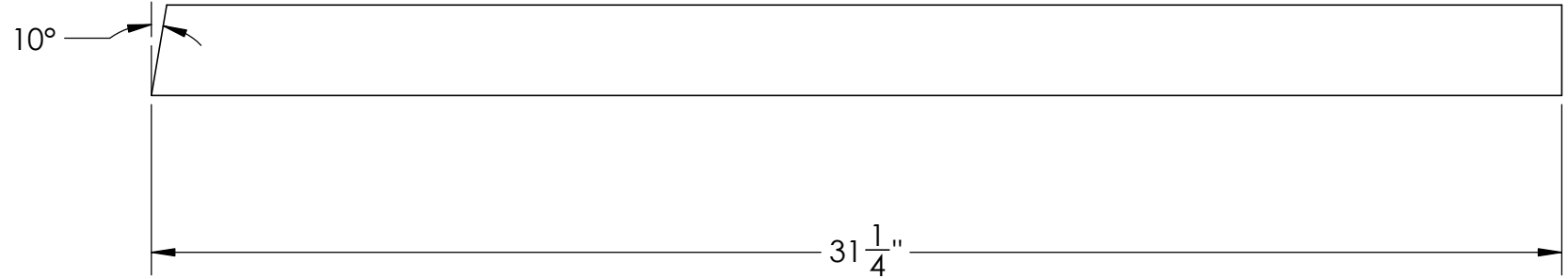
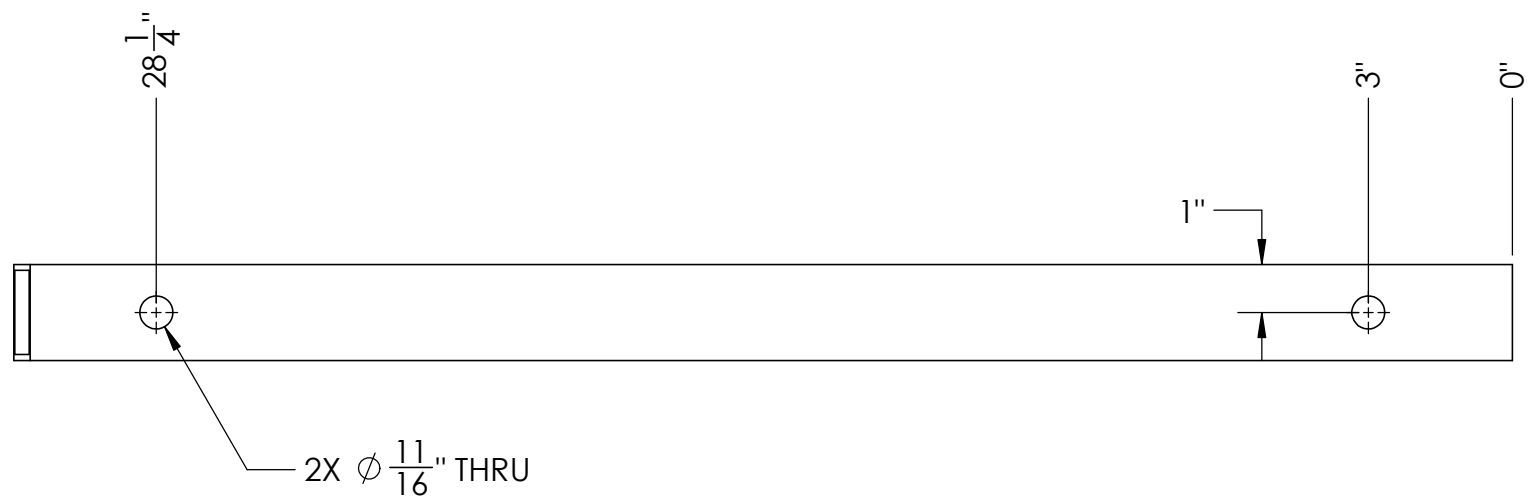
3

2

1

B

B



A

A

UNLESS OTHERWISE SPECIFIED
 FRACTIONAL ±1/16"
 ANGLES ±1°

STRUCTURAL ENGINEERS
 800.542.3302
 schaefer -inc.com

REV	DATE	ECO#	DESCRIPTION	DRAWN	JWB	3/14/2023	TITLE: 2 X 4 X 1/8 RECT. TUBE			
				CHECKED						
				APPROVED						
				SCALE	NONE					
				SHEET	6 OF 8					
				MATERIAL			DWG. NO.	AP5040AC06-06	REV.	0
				COMPANY	N/A					
<small>This material is the property of Progressive Products Inc. and should not be reproduced, published, or disclosed to others without authorization. The material shall not be used in any way against or detrimental to Progressive Products Inc., Pittsburg, KS. All rights reserved.</small>				PROGRESSIVE PRODUCTS INC. 3305 AIRPORT CIRCLE PITTSBURG, KS 66762 P: (620)-235-1712 F: (620)-235-1772					SIZE	B

4

3

2

1

4

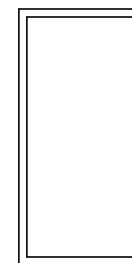
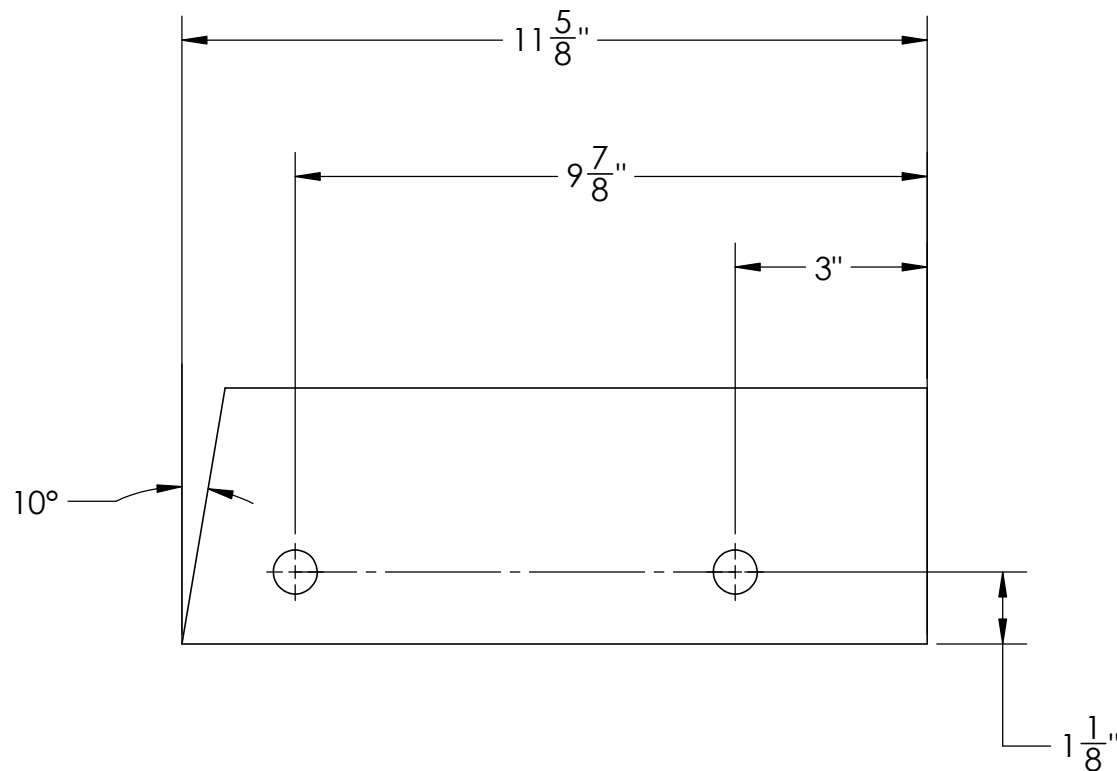
3

2

1

QTY: 4

MATERIAL: 2 X 2 X 1/8 AL SQ. TUBE



2 X 4 X 1/8 RECT. AL TUBE 6061-T6

B

B

A

A

STRUCTURAL ENGINEERS
800.542.3302
schaefer-inc.com

UNLESS OTHERWISE SPECIFIED
FRACTIONAL ±1/16"
ANGLES ±1°

REV	DATE	ECO#	DESCRIPTION	DRAWN	JWB	3/14/2023	TITLE: 2 X 2 X 1/8 SQ. TUBE			
				CHECKED						
				APPROVED						
				SCALE	NONE					
				SHEET	7 OF 8					
				MATERIAL						
				COMPANY	N/A		DWG. NO.	AP5040AC06-07	REV.	0
<small>This material is the property of Progressive Products Inc. and should not be reproduced, published, or disclosed to others without authorization. The material shall not be used in any way against or detrimental to Progressive Products Inc., Pittsburg, KS. All rights reserved.</small>				PROGRESSIVE PRODUCTS INC. 3305 AIRPORT CIRCLE PITTSBURG, KS 66762 P: (620)-235-1712 F: (620)-235-1772					SIZE	B

4

3

2

1

4

3

2

1

QTY: 4

MATERIAL: 2 X 2 X 1/8 AL SQ. TUBE

B

B

128 1/4"

2 X 2 X 1/8
SQ. AL TUBE


A

A

UNLESS OTHERWISE SPECIFIED
FRACTIONAL ±1/16"
ANGLES ±1°

STRUCTURAL ENGINEERS
800.542.3302
schaefer -inc.com

schaefer

REV	DATE	ECO#	DESCRIPTION	DRAWN	JWB	3/14/2023	TITLE: 2 X 2 X 1/8 RECT. TUBE			
				CHECKED						
				APPROVED						
				SCALE	NONE					
				SHEET	8 OF 8					
				MATERIAL						
				COMPANY	N/A		DWG. NO.	AP5040AC06-08	REV.	0
<small>This material is the property of Progressive Products Inc. and should not be reproduced, published, or disclosed to others without authorization. The material shall not be used in any way against or detrimental to Progressive Products Inc., Pittsburg, KS. All rights reserved.</small>				PROGRESSIVE PRODUCTS INC. 3305 AIRPORT CIRCLE PITTSBURG, KS 66762 P: (620)-235-1712 F: (620)-235-1772					SIZE B	

4

3

2

1

4

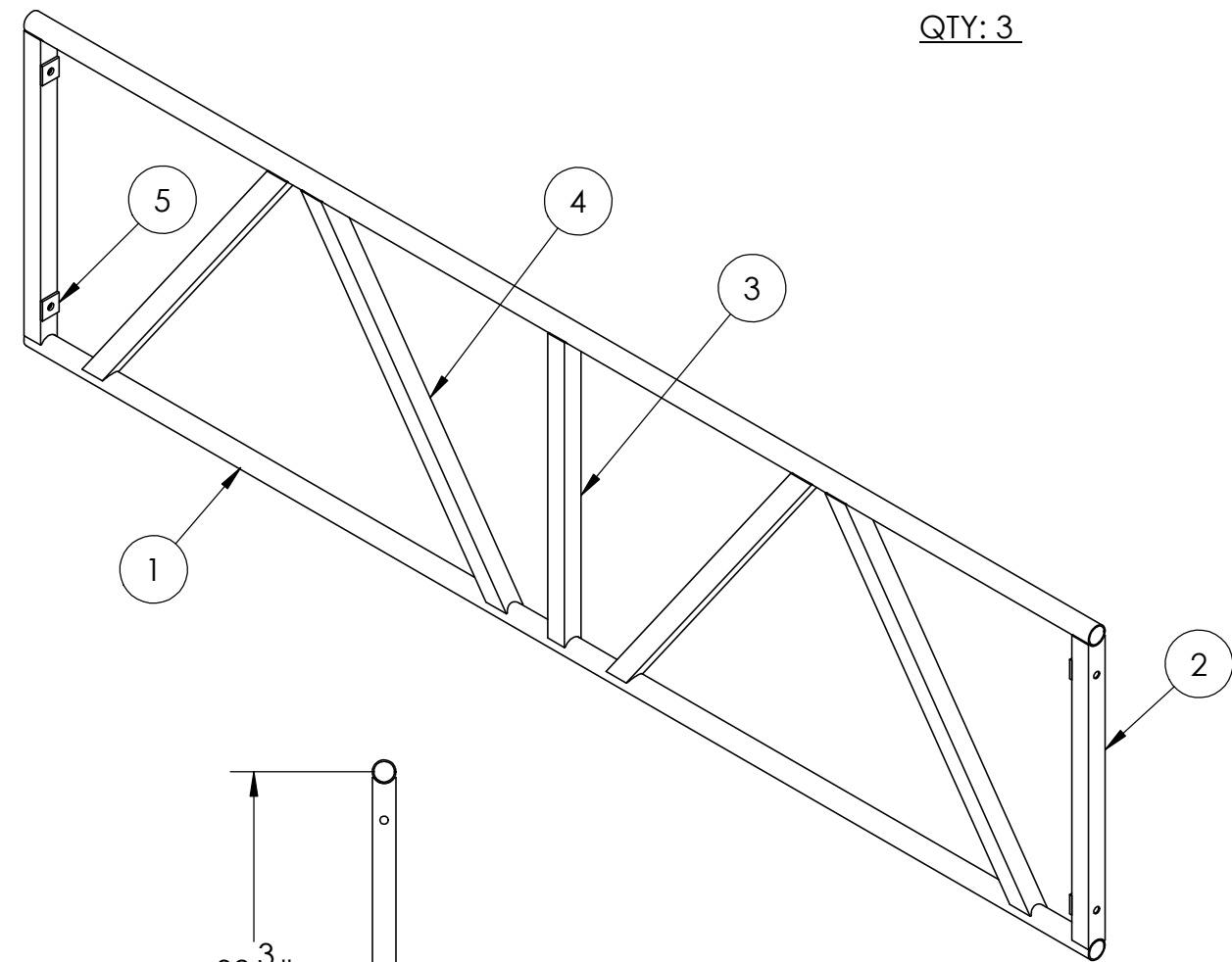
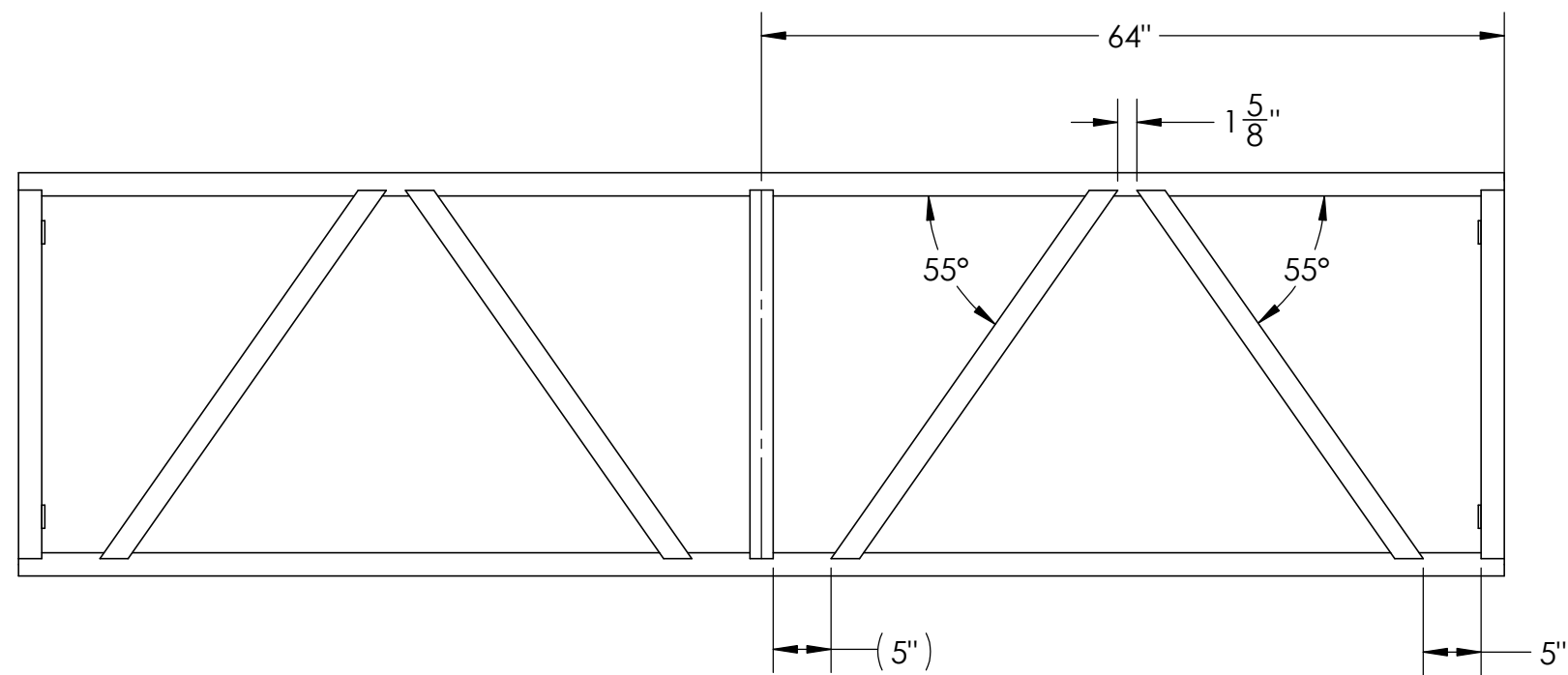
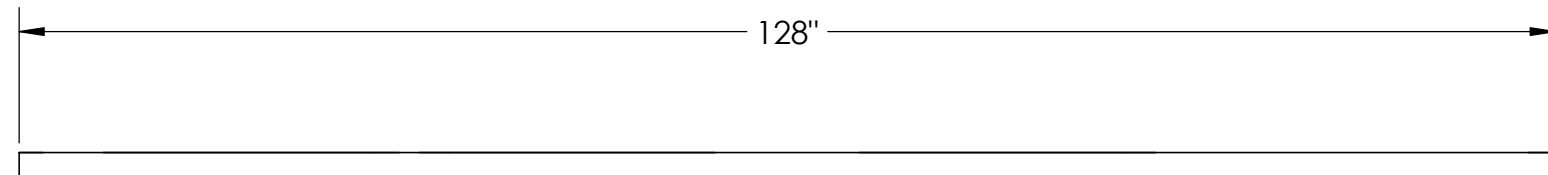
3

2

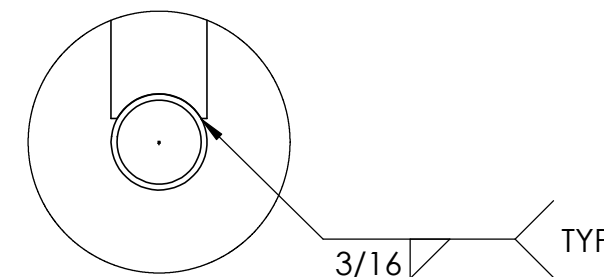
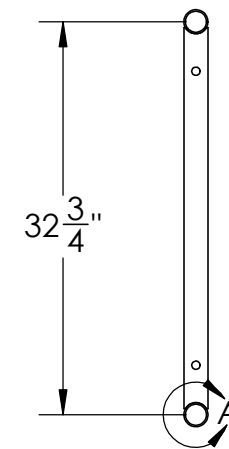
1

B

B



QTY: 3



DETAIL A

UNLESS OTHERWISE SPECIFIED
 FRACTIONAL ANGLES ±1/16" ±1°

A

A

STRUCTURAL ENGINEERS
 800.542.3302
 schaefer-inc.com
schaefer

ITEM NO.	DESCRIPTION	DWG/JB PART NUMBER	QTY.
1	Ø2" X 1/8" AL TUBE 6061-T6	AP5040AC07-03	2
2	2 X 2 X 1/8 SQ. TUBE	AP5040AC07-02	2
3	2 X 2 X 1/8 SQ. TUBE	AP5040AC07-04	1
4	2 X 2 X 1/8 SQ. TUBE	AP5040AC07-05	4
5	2" X 1/4" AL FLAT BAR	AP5040AC05-05	4

REV	DATE	ECO#	DESCRIPTION	DRAWN	JWB	3/17/2023	TITLE:		
				CHECKED			HORIZONTAL RECTANGLE TRUSS		
				APPROVED					
				SCALE	NONE				
				SHEET	1 OF 5				
				MATERIAL					
				COMPANY	N/A		DWG. NO. AP5040AC07-01	REV. 0	SIZE B
<small>This material is the property of Progressive Products Inc. and should not be reproduced, published, or disclosed to others without authorization. The material shall not be used in any way against or detrimental to Progressive Products Inc., Pittsburg, KS. All rights reserved.</small>				PROGRESSIVE PRODUCTS INC. 3305 AIRPORT CIRCLE PITTSBURG, KS 66762 P: (620)-235-1712 F: (620)-235-1772					

4

3

2

1

4

3

2

1

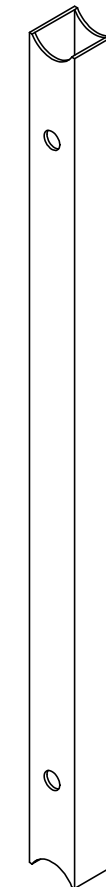
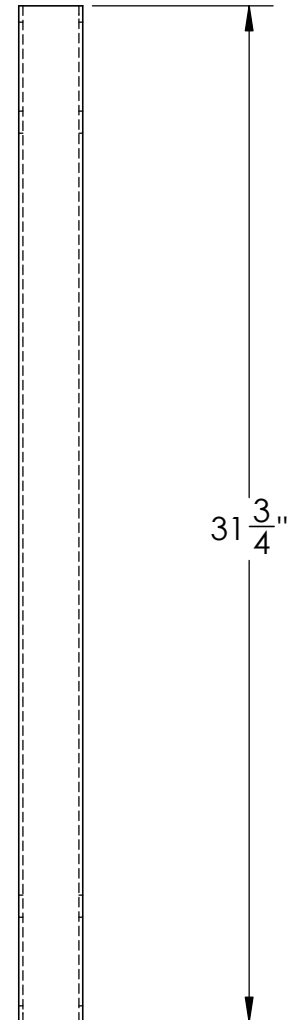
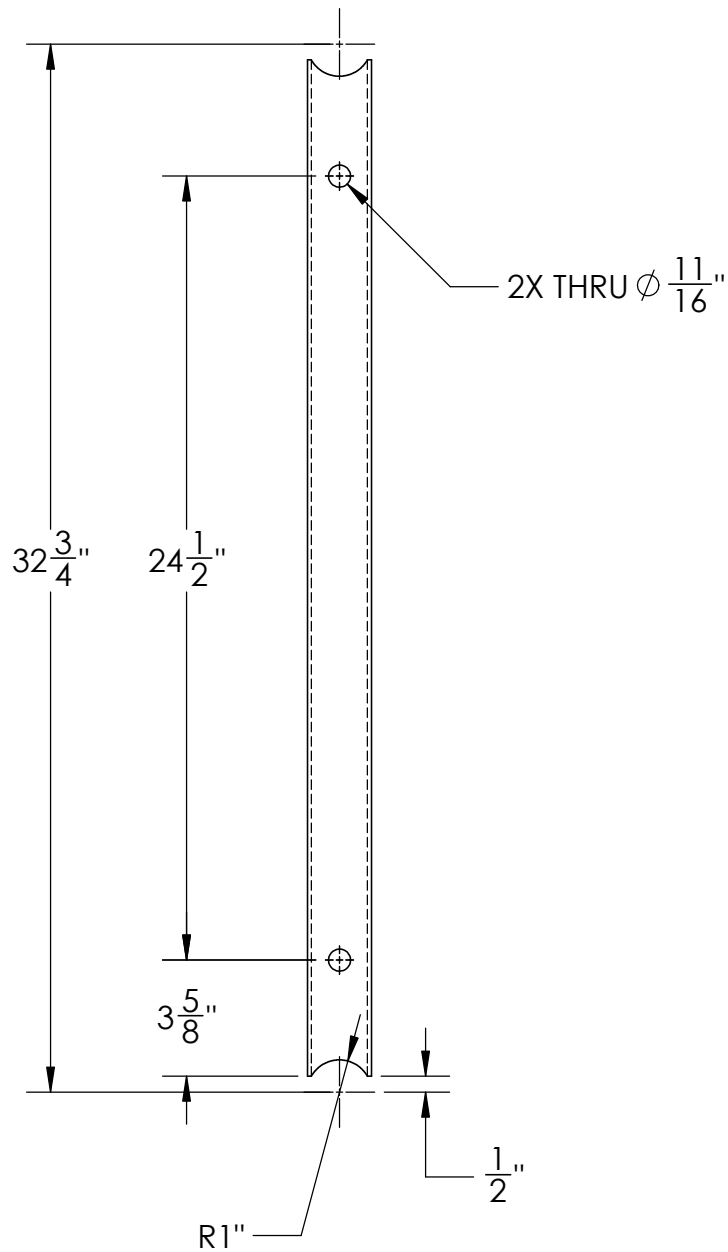
QTY: 6

MATERIAL: 2 X 2 X 1/8 AL SQ. TUBE 6061-T6



2 X 2 X 1/8
SQ. AL TUBE

B



B

A

A

STRUCTURAL ENGINEERS
800.542.3302
schaefer-inc.com

schaefer

UNLESS OTHERWISE SPECIFIED

FRACTIONAL $\pm 1/16$ "

ANGLES $\pm 1^\circ$

REV	DATE	ECO#	DESCRIPTION	DRAWN	JWB	3/17/2023	TITLE: 2 X 2 X 1/8 SQ. TUBE			
				CHECKED						
				APPROVED						
				SCALE	NONE					
				SHEET	2 OF 5					
				MATERIAL			DWG. NO.	AP5040AC07-02	REV.	0
				COMPANY	N/A					
				PROGRESSIVE PRODUCTS INC. 3305 AIRPORT CIRCLE PITTSBURG, KS 66762 P: (620)-235-1712 F: (620)-235-1772					SIZE	B

This material is the property of Progressive Products Inc. and should not be reproduced, published, or disclosed to others without authorization. The material shall not be used in any way against or detrimental to Progressive Products Inc., Pittsburg, KS. All rights reserved.

4

3

2

1

4

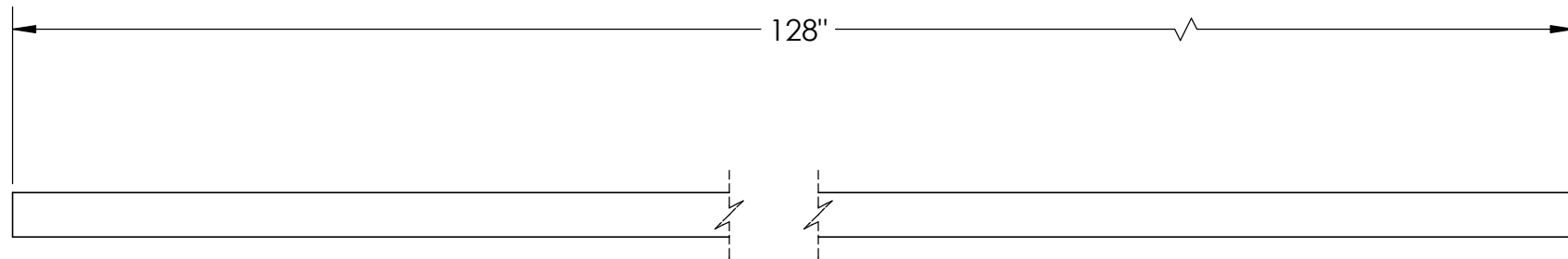
3

2

1

QTY: 6

MATERIAL: Ø 2" X 1/8" AL TUBE 6061-T6



B

B

A

A

STRUCTURAL ENGINEERS
800.542.3302
schaefer -inc.com

schaefer

UNLESS OTHERWISE SPECIFIED
FRACTIONAL ±1/16"
ANGLES ±1°

REV	DATE	ECO#	DESCRIPTION	DRAWN	JWB	3/17/2023	TITLE: Ø2" X1/8" AL TUBE 6061-T6		
				CHECKED			DWG. NO. AP5040AC07-03		
				APPROVED			REV. 0		
				SCALE	NONE		SIZE B		
				SHEET	3 OF 5				
				MATERIAL					
				COMPANY	N/A				
<p>This material is the property of Progressive Products Inc. and should not be reproduced, published, or disclosed to others without authorization. The material shall not be used in any way against or detrimental to Progressive Products Inc., Pittsburg, KS. All rights reserved.</p>				<p>PROGRESSIVE PRODUCTS INC. 3305 AIRPORT CIRCLE PITTSBURG, KS 66762 P: (620)-235-1712 F: (620)-235-1772</p>					

4

3

2

1

4

3

2

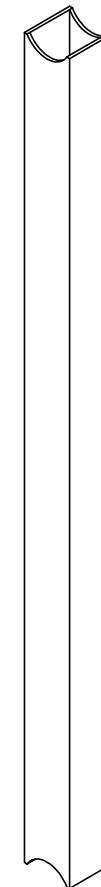
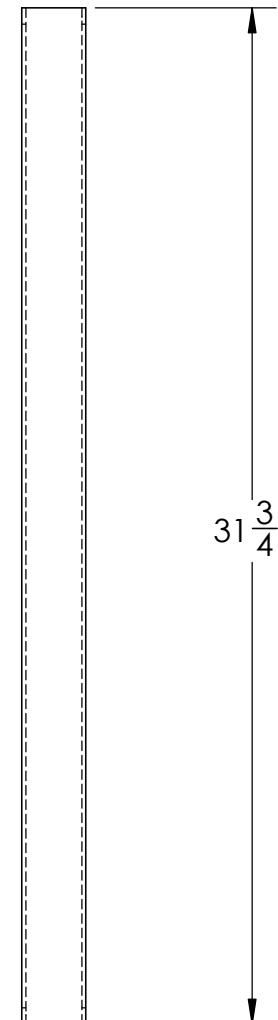
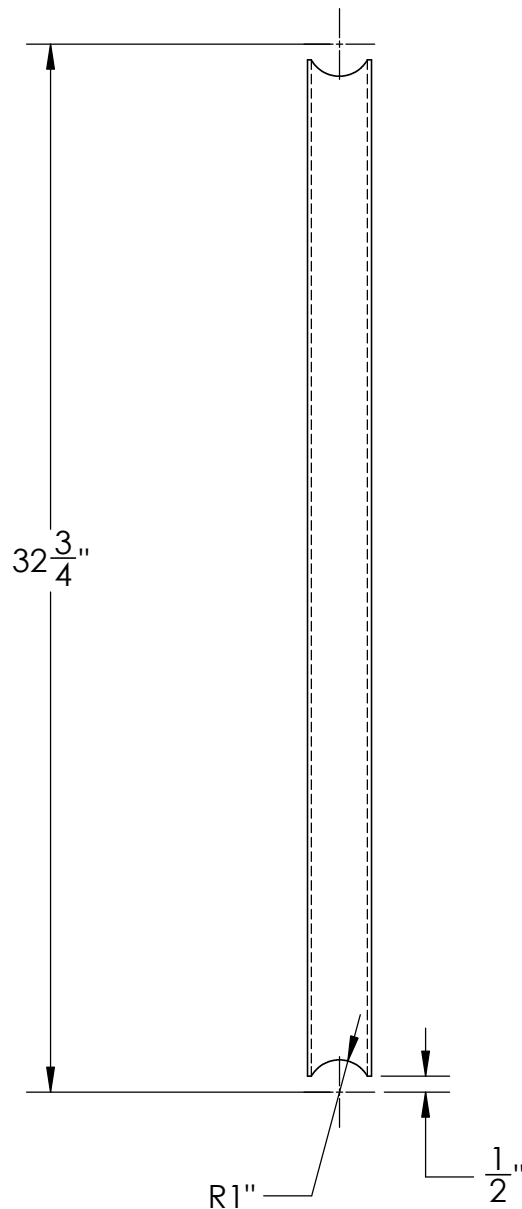
1

QTY: 3

MATERIAL: 2 X 2 X 1/8 AL SQ. TUBE 6061-T6



2 X 2 X 1/8
SQ. AL TUBE



B

B

A

A

STRUCTURAL ENGINEERS
800.542.3302
schaefer-inc.com

schaefer

UNLESS OTHERWISE SPECIFIED
FRACTIONAL ±1/16"
ANGLES ±1°

REV	DATE	ECO#	DESCRIPTION	DRAWN	JWB	3/17/2023	TITLE: 2 X 2 X 1/8 SQ. TUBE			
				CHECKED						
				APPROVED						
				SCALE	NONE					
				SHEET	4 OF 5					
				MATERIAL						
				COMPANY	N/A		DWG. NO.	AP5040AC07-04	REV.	0
				PROGRESSIVE PRODUCTS INC. 3305 AIRPORT CIRCLE PITTSBURG, KS 66762 P: (620)-235-1712 F: (620)-235-1772					SIZE B	

This material is the property of Progressive Products Inc. and should not be reproduced, published, or disclosed to others without authorization. The material shall not be used in any way against or detrimental to Progressive Products Inc., Pittsburg, KS. All rights reserved.

4

3

2

1

4

3

2

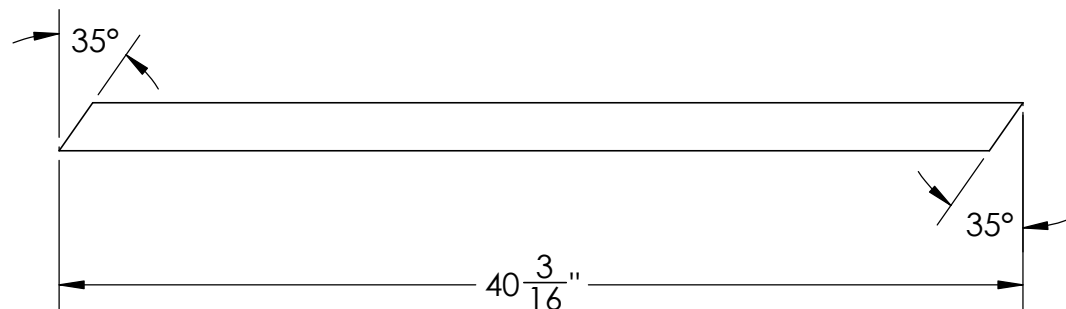
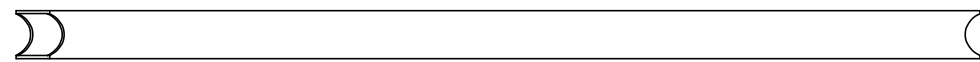
1

QTY: 12

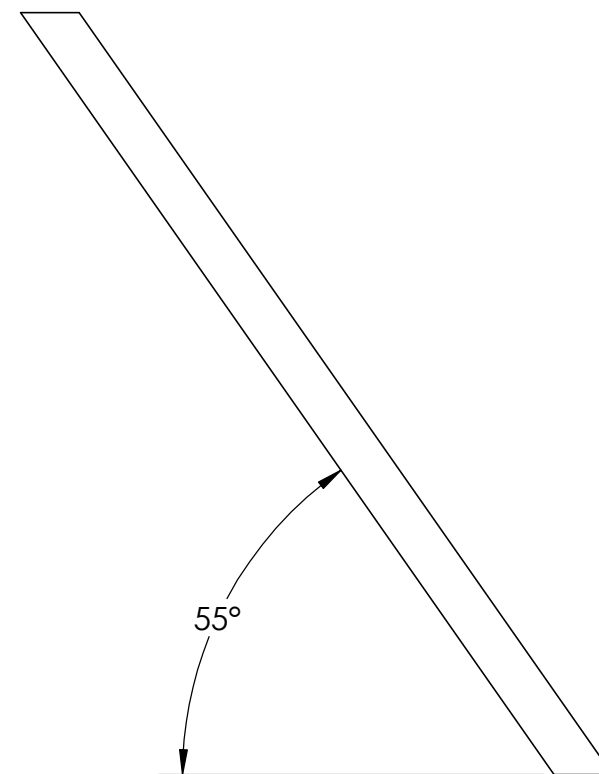
MATERIAL: 2 X 2 X 1/8 AL SQ. TUBE 6061-T6

B

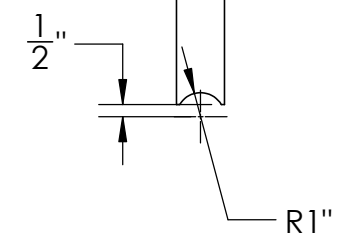
B



VIEW OF PART LAID FLAT



VIEW OF PART IN WELDED POSITION



A

A

STRUCTURAL ENGINEERS
800.542.3302
schaefer-inc.com

schaefer

UNLESS OTHERWISE SPECIFIED
FRACTIONAL ±1/16"
ANGLES ±1°

REV	DATE	ECO#	DESCRIPTION	DRAWN	JWB	3/21/2023	TITLE: 2 X 2 X 1/8 SQ. TUBE			
				CHECKED						
				APPROVED						
				SCALE	NONE					
				SHEET	5 OF 5					
				MATERIAL						
				COMPANY	N/A		DWG. NO.	AP5040AC07-05	REV.	0
This material is the property of Progressive Products Inc. and should not be reproduced, published, or disclosed to others without authorization. The material shall not be used in any way against or detrimental to Progressive Products Inc., Pittsburg, KS. All rights reserved.				PROGRESSIVE PRODUCTS INC. 3305 AIRPORT CIRCLE PITTSBURG, KS 66762 P: (620)-235-1712 F: (620)-235-1772					SIZE	
									B	

4

3

2

1

4

3

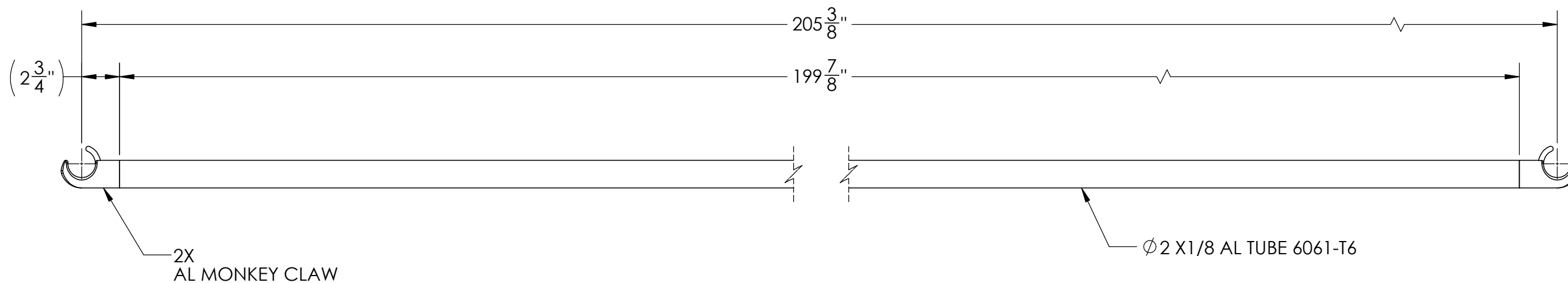
2

1

QTY: 6

B

B



A

A

STRUCTURAL ENGINEERS
800.542.3302
schaefer -inc.com

schaefer

REV	DATE	ECO#	DESCRIPTION	DRAWN	CHECKED	APPROVED	SCALE	SHEET	MATERIAL	COMPANY	TITLE:	DWG. NO.	REV.	SIZE
							NONE	1 OF 1	N/A	PROGRESSIVE PRODUCTS INC. 3305 AIRPORT CIRCLE PITTSBURG, KS 66762 P: (620)-235-1712 F: (620)-235-1772	ROOF CROSS BAR	AP5040AC09-01	0	B

4

3

2

1