

# PORTABLE STAGES



**REFLECTIONS PRODUCTIONS INC.**

Contact: Thomas G. Mitchell 786-255-4949

## Technical Specifications for Sellner MS2416 Mobile Stage

### Trailer Specifications

|                                    |                           |
|------------------------------------|---------------------------|
| Width                              | 8'-5"                     |
| Length                             | 28'-1"                    |
| Height:                            | 7'-4"                     |
| Curb weight                        | 8500 lbs                  |
| Tongue weight                      | 1520 lbs                  |
| Gross vehicle weight rating (GVWR) | 12000 lbs                 |
| Gross axle(s) weight rating (GAWR) | 11000 lbs                 |
| Additional load allowed on trailer | 3500 lbs                  |
| Cargo space available              | 7'-2"W x 3'-9"H x 23'-8"L |
| Hauling system                     | 2-5/16 Ball coupling      |
|                                    |                           |

### Stage Floor Specifications

|                         |   |
|-------------------------|---|
| Depth:                  | 16'-0"  |
| Length:                 | 24'-0"  |
| Height from ground:     | 3'-1"   |
| Floor design live load: | 150 lb/sq ft  |
| Floor surface           | Aluminum sheet with painted non-skid surface on steel frame |
|                         |   |

### Roof Specifications (Stage erected)

|                              |   |
|------------------------------|---|
| Depth                        | 17'-6"  |
| Length                       | 25'-2"  |
| Height                       | 12'-9"  |
| Maximum clearance under roof | 9'-7.75" roof purlins, 9'-0.75" (FOH and BOH), 8'-11.75" center roof structures |
| Roof load bearing capacity   | 900 lbs   |
| Roof live load capacity      | 10 lbs/ sq ft distributed   |
| Roof surface                 | Fiberglass bound to steel   |
|                              |   |

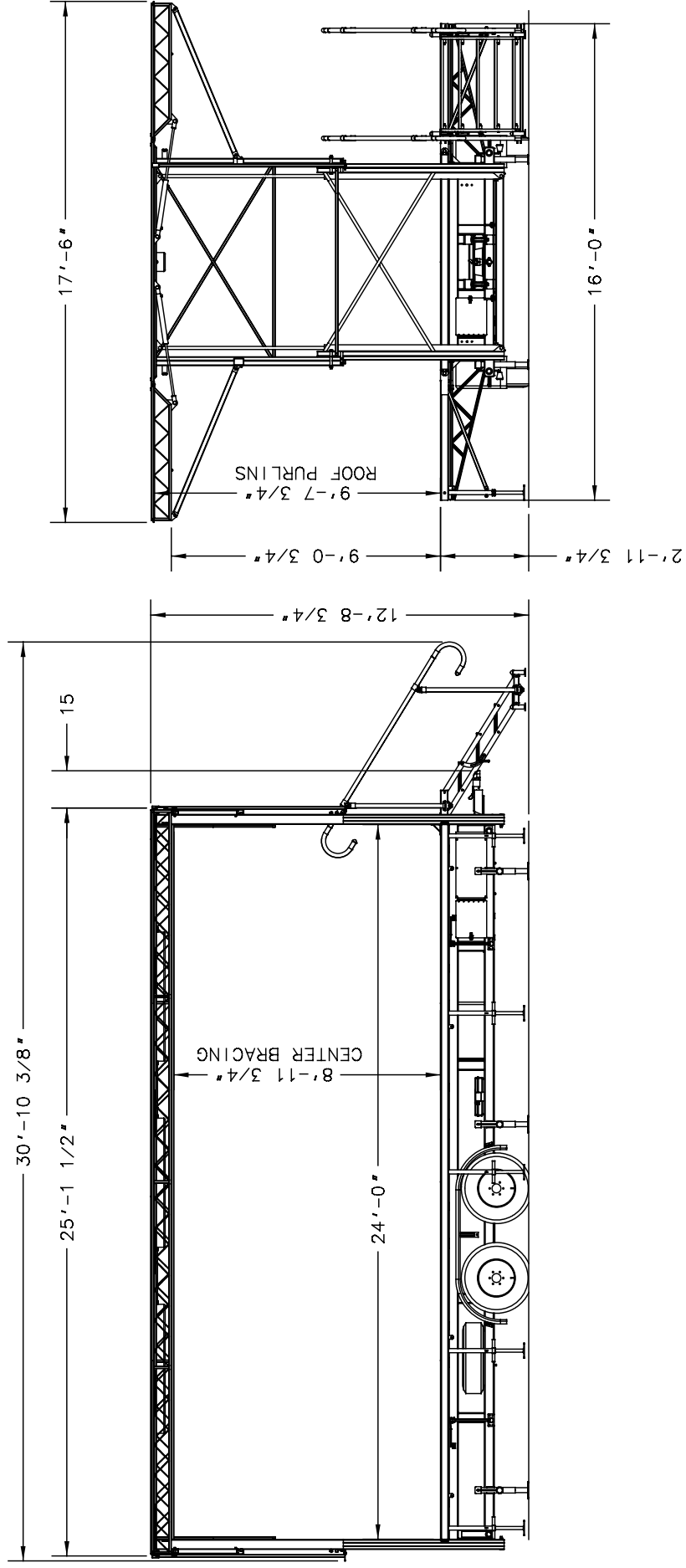
### Other Specifications

|                       |                      |
|-----------------------|----------------------|
| Wind limitations      | 40 mph with windwall |
| Installation time     | 1 hour- 1 technician |
| Recommended Personnel | 1 Stage hand         |
| Transportation        | 1 ton pick-up        |
|                       |                      |

### Optional Features

|                |   |
|----------------|---|
| Stair units    | 5 Step adjustable unit with aluminum treads<br>5 Step adjustable unit with quad ripple polyethylene surface |
| Guardrails     | 8' guardrails for Back of Stage<br>4" guardrails for sides  |
| Windwalls      | Colored solid vinyl<br>Black 71% Textaline  |
| Skirting       | Colored solid vinyl   |
| Portable decks | 4' x 8' quad ripple polyethylene surface interlocking decks<br>Optional sizes also available                |
| Drum risers    | 16' x 16' quad ripple polyethylene surface<br>Optional sizes also available                                 |
| Graphics       | Custom graphics for trailer sides   |
| Apparel        | Embroidered and silk screened apparel available   |
| Lecterns       | Various styles of aluminum powder coated lecterns for speaker presentations.                                |
|                |   |

All specifications and dimensions are subject to change without notification.



SELLNER MS2416 MOBILE STAGE



# REFLECTIONS PRODUCTIONS INC.

SWOWMOBILE 2416      Contact: Thomas G. Mitchell 786-255-4949

